

### ROOF TRUSS

Scale - 1:25

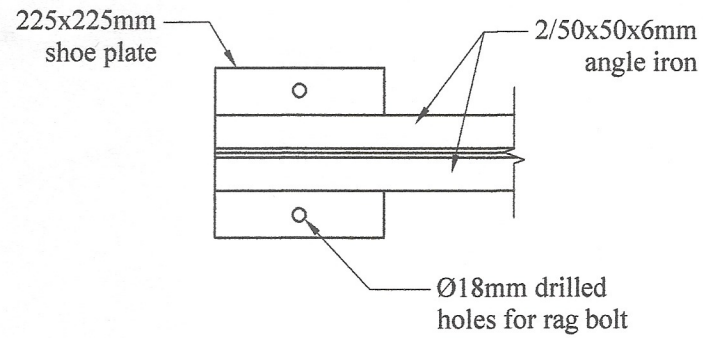
- Note:-**
1. Pitch of roof 25° for calicut tiles.
  2. All gusset plates to be 6mm thick.
  3. All bolts to be Ø12.5mm unless otherwise specified.
  4. Max spacing of trusses to be 3m (10'- 0").
  5. Provide 150x75mm purlins at center and lower edge and 150x50mm ridge plate at crown for 3m spacing of trusses.
  6. 75x75x6mm angle cleats 150mm long to be welded as shown with 2 nos. of Ø12.5mm holes on vertical leg.
  7. 225X225mm 1:3:6 (25) concrete template 750mm long to be provided if the truss to be placed on a brick wall.

No any alteration is allowed without due permission of DCS(Eng). Any unauthorized alteration is subjected to have disciplinary action. Reproduction is not permitted.  
DCS(Eng)

**STEEL ROOF TRUSS SPAN 6m (20'- 0"), PITCH 25°,  
MAXIMUM SPACING 3m (10'- 0")  
FOR CALICUT TILE ROOF.**

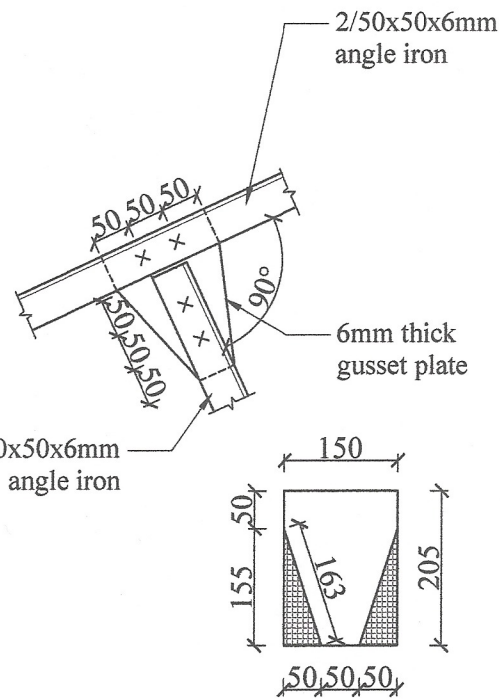
All right reserved this work or any part of there of may not be reproduced without written permission of the Engineering Services Office of Southern Provincial Council.

Sheet No : 01	Checked By : S. Jayaw.	<b>DETAILED DRAWING (RATE ANALYSIS)</b>  <b>ENGINEERING SERVICES OFFICE.</b> SOUTHERN PROVINCIAL COUNCIL, GALLE. <small>Tel: 09122-42789 / 09122-42789 09122-40161 / 09122-32125 / 09122-42322 / 09122-42322</small> <small>Fax: 09122-42789 / 09122-42789 09122-40161 / 09122-32125 E-mail: engserv@spes.gov.lk</small>
Drawing No : SPES / Rate 23 / Ir - 01	D.O.A. : D. Ashik	
Scale : 1:25	Engineer Assistant : K. Jay	
Date : 2023-08-04	Design Engineer : R. M. Jay	
Drawn By : Monali	Director (Engineering) : C. B. Jay	



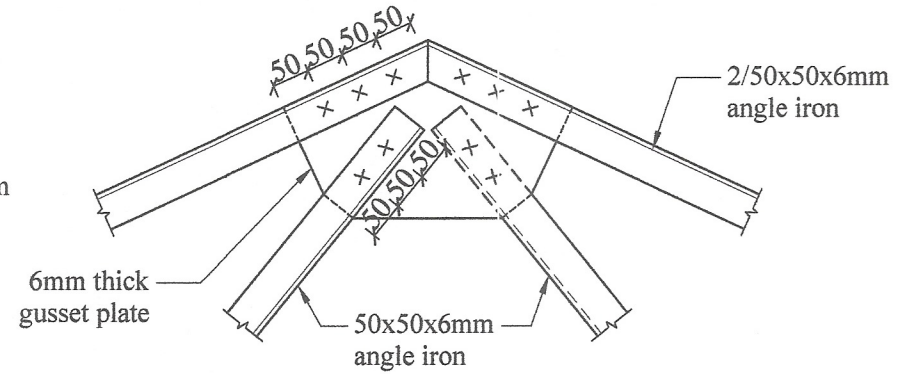
**PLAN AT - A**

Scale - 1:10



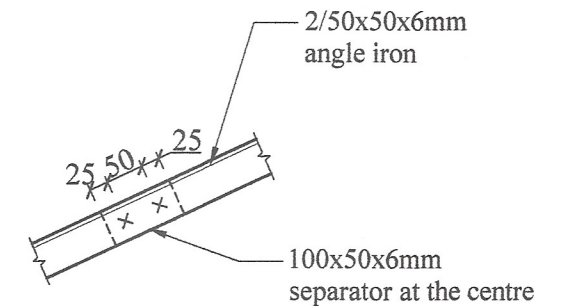
**DETAIL OF B**

Scale - 1:10



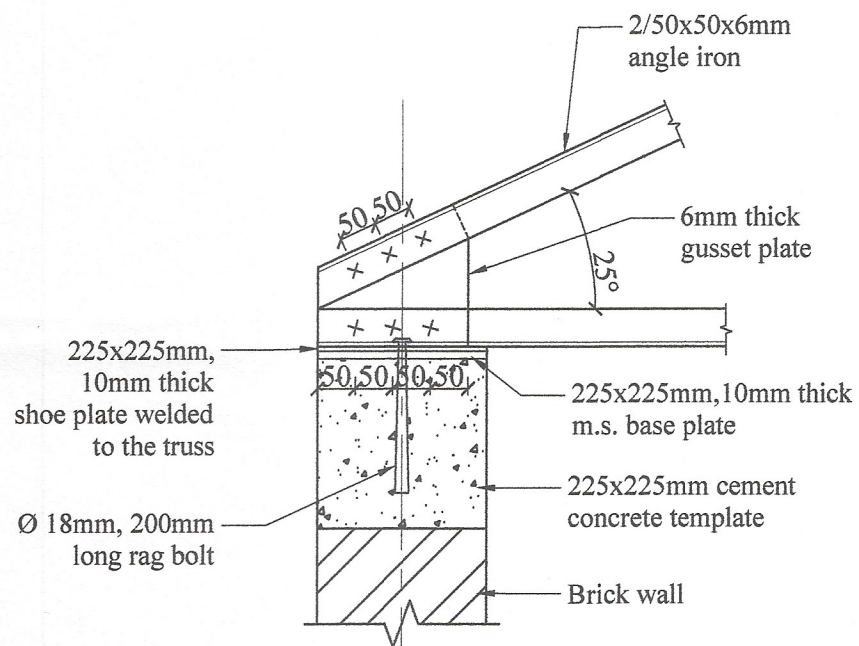
**CROWN DETAIL**

Scale - 1:10



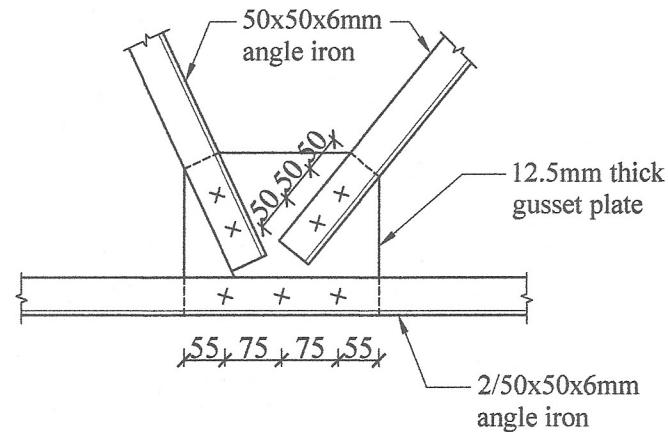
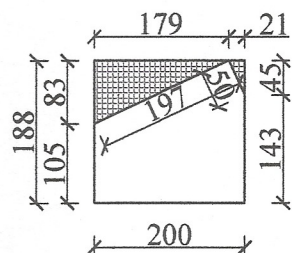
**DETAIL AT - D**

Scale - 1:10



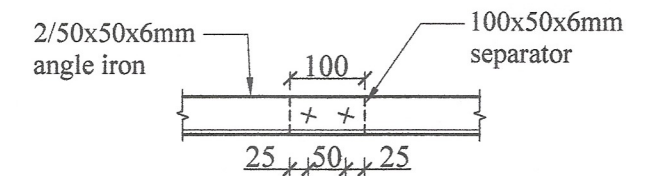
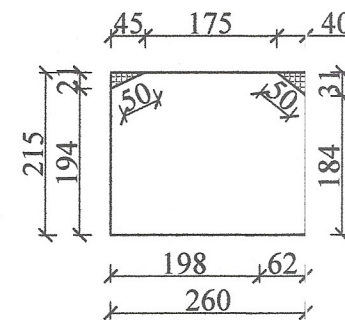
**DETAIL OF A**

Scale - 1:10



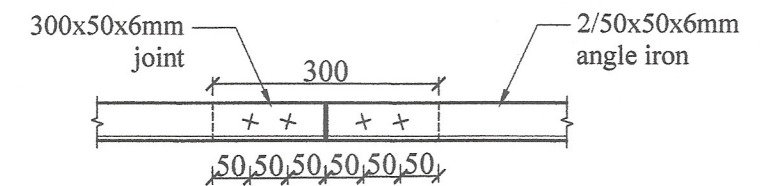
**DETAIL OF C**

Scale - 1:10



**DETAIL AT - E**

Scale - 1:10



**DETAIL AT - F**

Scale - 1:10

No any alteration is allowed without due permission of DCS(Eng). Any unauthorized alteration is subjected to have disciplinary action. Re-production is not permitted.  
DCS(Eng)

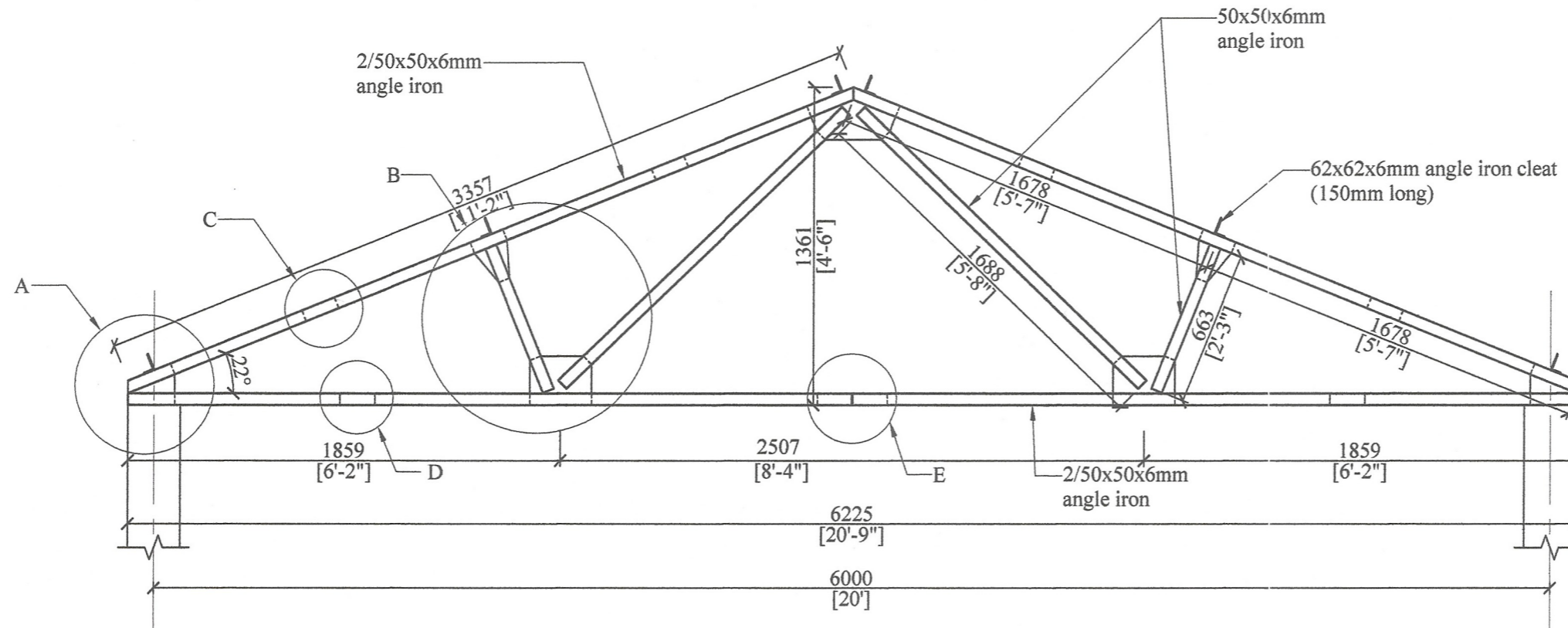
**STEEL ROOF TRUSS SPAN 6m (20'- 0"), PITCH 25°,  
MAXIMUM SPACING 3m (10'- 0")  
FOR CALICUT TILE ROOF.**

All right reserved this work or any part of there of may not be reproduced without written permission of the Engineering Services Office of Southern Provincial Council.

Sheet No : 02	Checked By : <i>Shyam</i> (S.P. Wickramasinghe)
Drawing No : SPES / Rate 23 / Ir - 01	D.O.A. : <i>C. Deshika</i> (G.N.R. Ekanayake)
Scale : 1:10	Engineer Assistant : <i>R.D.</i> (H.C.S. Perera)
Date : 2023-08-04	Design Engineer : <i>N. Nirosh</i> (Eng. R.M.S. Manasinghe)
Drawn By : Monali	Director (Engineering) : <i>C. b. b.</i> (Eng. C.B. Abeyaratne)

**DETAILED DRAWING  
(RATE ANALYSIS)**

**ENGINEERING SERVICES OFFICE,  
SOUTHERN PROVINCIAL COUNCIL, GALLE.**  
74- 09122-42786 / 09122-42787 09122-49191 / 09122-53125 / 09122-42282 / 0902586745  
FAX: 09122-42786 / 09122-42787 09122-49191 / 09122-53125 E-mail: engserv@spco.lk



### ROOF TRUSS

Scale - 1:25

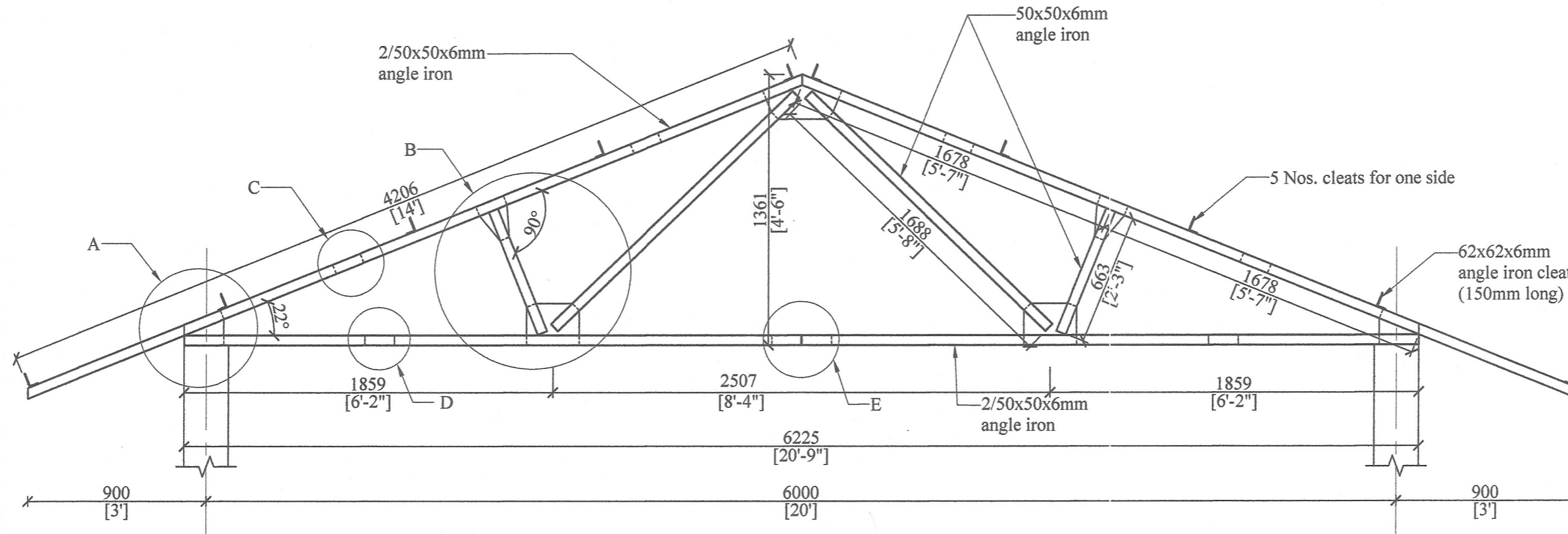
- Note:-**
1. Pitch of roof 22° for asbestos sheets.
  2. All gusset plates to be 6mm thick.
  3. All bolts to be Ø12.5mm unless otherwise specified.
  4. Length of all members to be verified.
  5. 50x50x6mm angles to be used for all members.
  6. 75x75x6mm angle cleats 150mm long to be welded at given centres, to support timber purlins.
  7. 225x225mm concrete column or 225x300mm, 1:3:6 (25) concrete template 400mm long.

No any alteration is allowed without due permission of DCS(Eng). Any unauthorized alteration is subjected to have disciplinary action. Re-production is not permitted.  
DCS(Eng)

**STEEL ROOF TRUSS SPAN 6m (20'- 0"), PITCH 22°  
FOR ASBESTOS SHEET ROOF.  
( WITHOUT EAVE )**

All right reserved this work or any part of there of may not be reproduced without written permission of the Engineering Services Office of Southern Provincial Council.

Sheet No : 01	Checked By : <i>S. Jayan</i> (S.P. Weerasinghe)	<b>DETAILED DRAWING (RATE ANALYSIS)</b>
Drawing No : SPES / Rate 23 / Ir - 02	D.O.A. : <i>C. Dasha</i> (GNR, Kandy)	
Scale : 1:25	Engineer Assistant : <i>N. M. Jayasinghe</i> (H.K.S. Perera)	<b>ENGINEERING SERVICES OFFICE, SOUTHERN PROVINCIAL COUNCIL, GALLE.</b>
Date : 2023-08-04	Design Engineer : <i>N. M. Jayasinghe</i> (Eng. N.M.S. Manasinghe)	
Drawn By : Monali	Director (Engineering) : <i>C.B.A.</i> (Eng. C.B. Abeyaratne)	



### ROOF TRUSS

Scale - 1:25

- Note:-**
1. Pitch of roof 22° for asbestos sheets.
  2. All gusset plates to be 6mm thick.
  3. All bolts to be Ø12.5mm unless otherwise specified.
  4. Length of all members to be verified.
  5. 50x50x6mm angles to be used for all members.
  6. 62x62x6mm angle cleats 150mm long to be welded at given centres, to support angle iron.
  7. 225x225mm concrete column or 225x300mm, 1:3:6 (25) concrete template 400mm long.

No any alteration is allowed without due permission of DCS(Eng). Any unauthorized alteration is subjected to have disciplinary action. Re-production is not permitted.  
DCS(Eng)

**STEEL ROOF TRUSS SPAN 6m (20'- 0"), PITCH 22°, FOR ASBESTOS SHEET ROOF.**

All right reserved this work or any part of there of may not be reproduced without written permission of the Engineering Services Office of Southern Provincial Council.

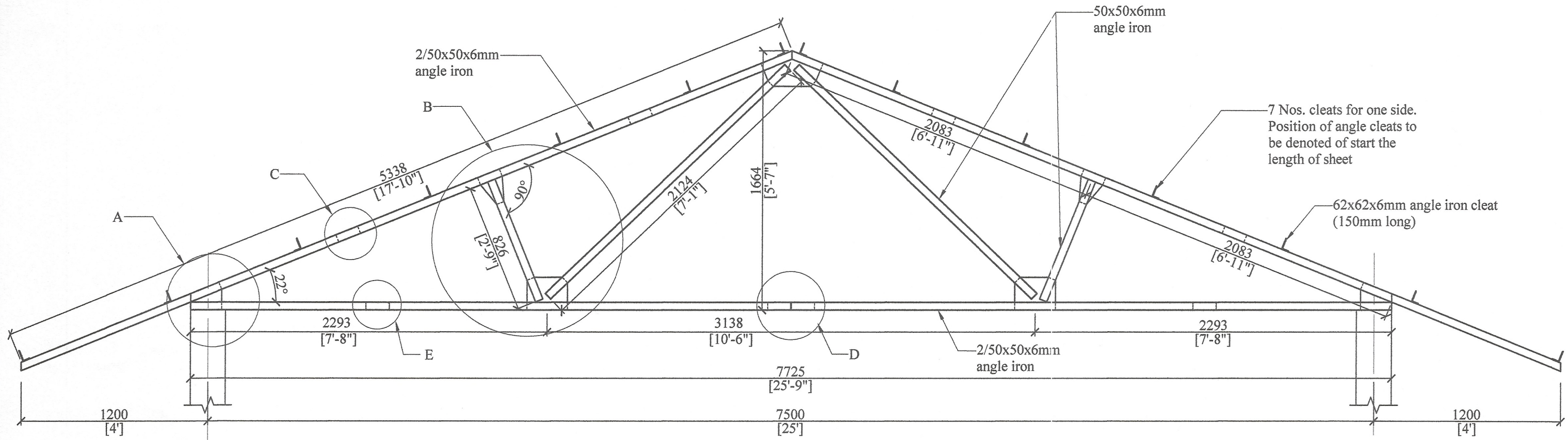
Sheet No : 01	Checked By : <i>Syam</i> (S.P. Weerasinghe)
Drawing No : SPES / Rate 23 / Ir - 03	D.O.A. : <i>C.Dash</i> (G.N.R. Ekampala)
Scale : 1:25	Engineer Assistant : <i>K.D.</i> (H.K.S. Premathilaka)
Date : 2023-08-04	Design Engineer : <i>N.M.M.</i> (Eng. N.M.S. Mammala)
Drawn By : Monali	Director (Engineering) : <i>C.B.</i> (Eng. C.B. Abayaratne)

**DETAILED DRAWING (RATE ANALYSIS)**

**ENGINEERING SERVICES OFFICE.**  
SOUTHERN PROVINCIAL COUNCIL, GALLE.

Tel: 01122-42781 / 01122-42782 / 01122-46181 / 01122-33151 / 01122-48321 / 01122-58745  
Fax: 01122-42781 / 01122-42782 / 01122-46181 / 01122-33151 E-mail: engserv@spcra.com





### ROOF TRUSS

Scale - 1:25

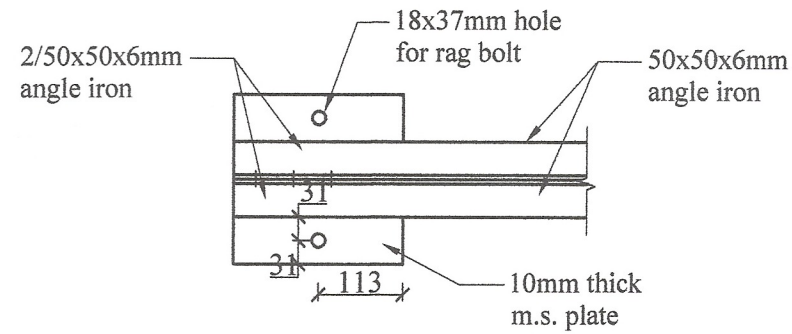
- Note:-**
1. Pitch of roof 22° for asbestos sheets.
  2. All gusset plates to be 6mm thick.
  3. All bolts to be Ø12.5mm unless otherwise specified.
  4. Length of all members to be verified.
  5. 50x50x6mm angles to be used for all members.
  6. 62x62x6mm angle cleats 150mm long to be welded at given centres, to support angle iron purlins.
  7. 225x225mm concrete column or 225x300mm, 1:3:6 (25) concrete template 400mm long.

No any alteration is allowed without due permission of DCS(Eng). Any unauthorized alteration is subjected to have disciplinary action. Re-production is not permitted.  
DCS(Eng)

**STEEL ROOF TRUSS SPAN 7.5m (25'- 0''), PITCH 22°  
FOR ASBESTOS SHEET ROOF.**

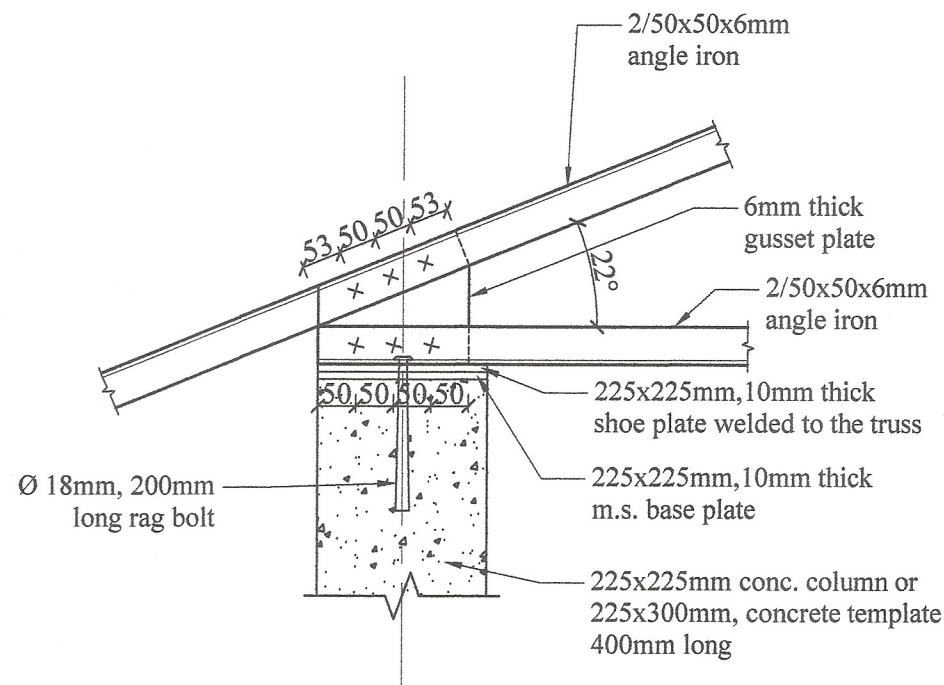
All right reserved this work or any part of there of may not be reproduced without written permission of the Engineering Services Office of Southern Provincial Council.

Sheet No : 01	Checked By : <i>Skyam</i> (S.P. Weerasinghe)	<b>DETAILED DRAWING (RATE ANALYSIS)</b>
Drawing No : SPES / Rate 23 / Ir - 04	D.O.A. : <i>C. D. Rajapaksa</i> (G.N.R. Ekanayake)	
Scale : 1:25	Engineer Assistant : <i>Ked</i> (H.E.S. Perumbathala)	
Date : 2023-08-04	Design Engineer : <i>N. N. Rajapaksa</i> (Eng. N.M.S. Muralidharan)	
Drawn By : Monali	Director (Engineering) : <i>C. S. S. S.</i> (Eng. C.R. Abeyaratne)	
ENGINEERING SERVICES OFFICE, SOUTHERN PROVINCIAL COUNCIL, GALLE. <small>74-0122-42768 / 0122-42769 / 0122-40181 / 0122-30125 / 0122-40262 / 002202745                  FAX: 0122-42768 / 0122-42769 / 0122-40181 / 0122-30125 E-mail: espso@spco.lk</small>		



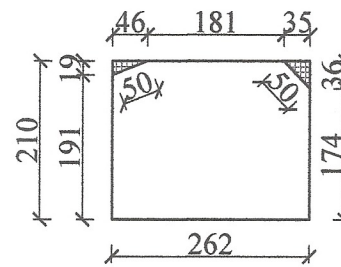
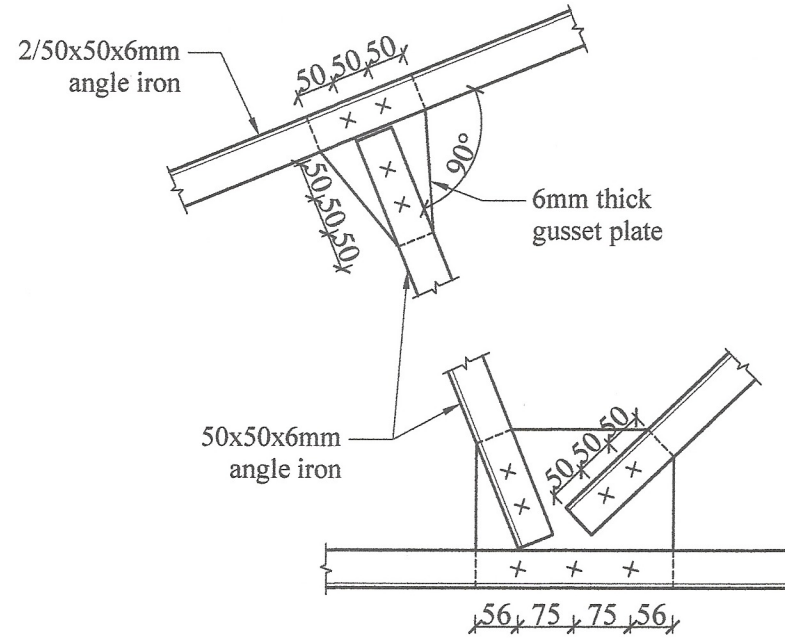
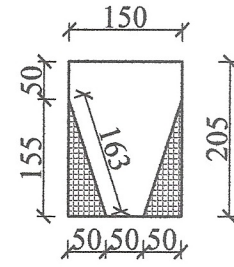
**PLAN AT - A**

Scale - 1:10



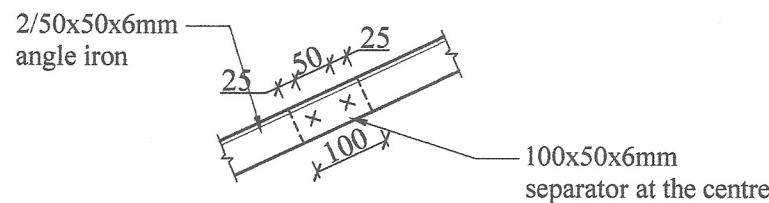
**DETAIL AT - A**

Scale - 1:10



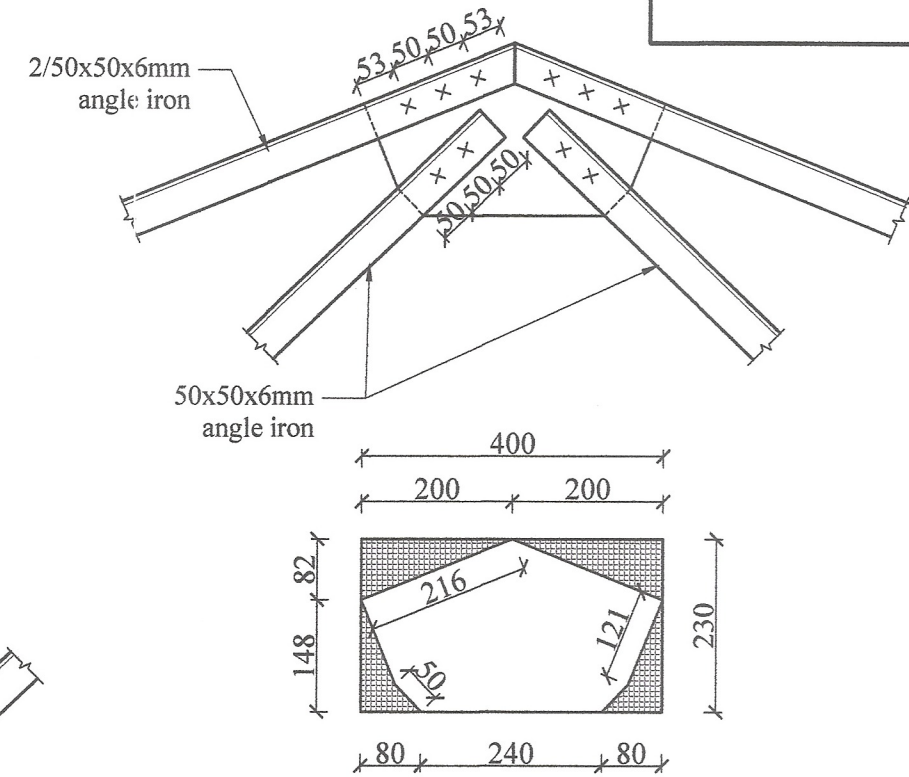
**DETAIL AT - B**

Scale - 1:10



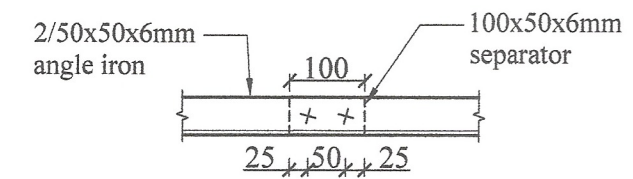
**DETAIL AT - C**

Scale - 1:10



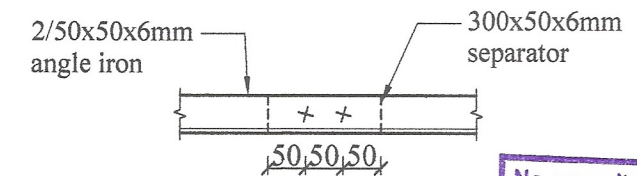
**CROWN DETAIL**

Scale - 1:10



**DETAIL AT - D**

Scale - 1:10



**DETAIL AT - E**

Scale - 1:10

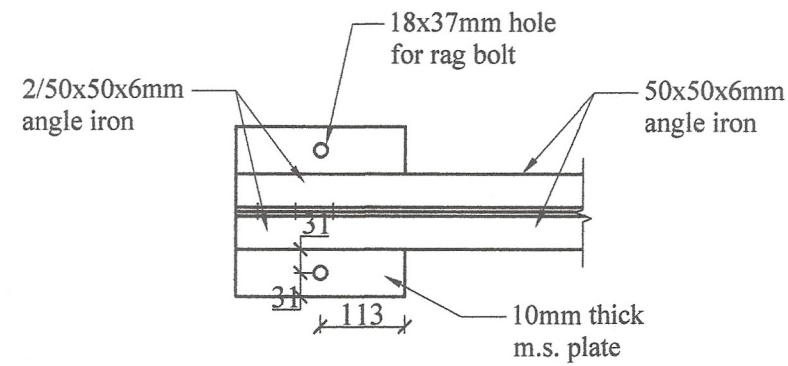
No any alteration is allowed without due permission of DCS(Eng). Any unauthorized alteration is subjected to have disciplinary action. Re-production is not permitted.  
DCS(Eng)

**STEEL ROOF TRUSS SPAN 7.5m (25'- 0"), PITCH 22° FOR ASBESTOS SHEET ROOF.**

All right reserved this work or any part of there of may not be reproduced without written permission of the Engineering Services Office of Southern Provincial Council.

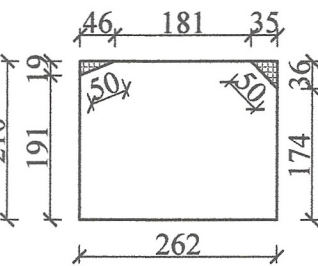
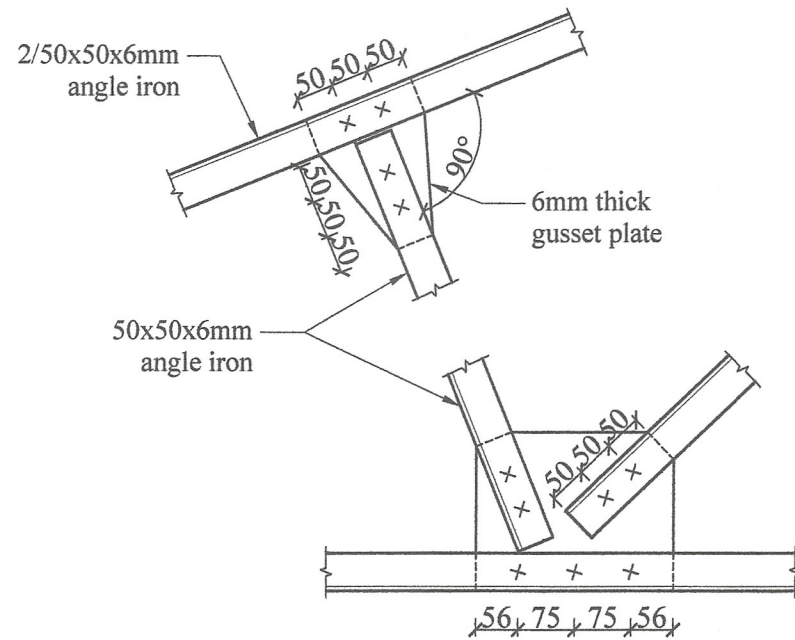
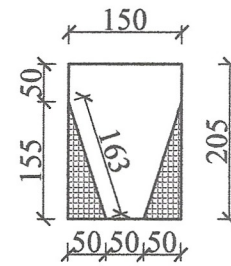
Sheet No : 02	Checked By (S.P. Weddunilage) : <i>Shyama</i>	<b>DETAILED DRAWING (RATE ANALYSIS)</b>  <b>ENGINEERING SERVICES OFFICE.</b> SOUTHERN PROVINCIAL COUNCIL, GALLE. <small>Tel: 09122-42786 / 09122-42787 09122-48181 / 09122-33125 / 09122-42882 / 092283745                  Fax: 09122-42786 / 09122-42787 09122-48181 / 09122-33125 E-mail: engserv@spc.gov.lk</small>
Drawing No : SPES / Rate 23 / Ir - 04	D.O.A. (G.N.R. Hanayake) : <i>C.Dashik</i>	
Scale : 1:10	Engineer Assistant (H.C.S. Perunthille) : <i>Kes</i>	
Date : 2023-08-04	Design Engineer (Eng. N.M.S. Manganam) : <i>N.M.M</i>	
Drawn By : Monali	Director (Engineering) (Eng. C.B. Abeysena) : <i>C.B.A</i>	





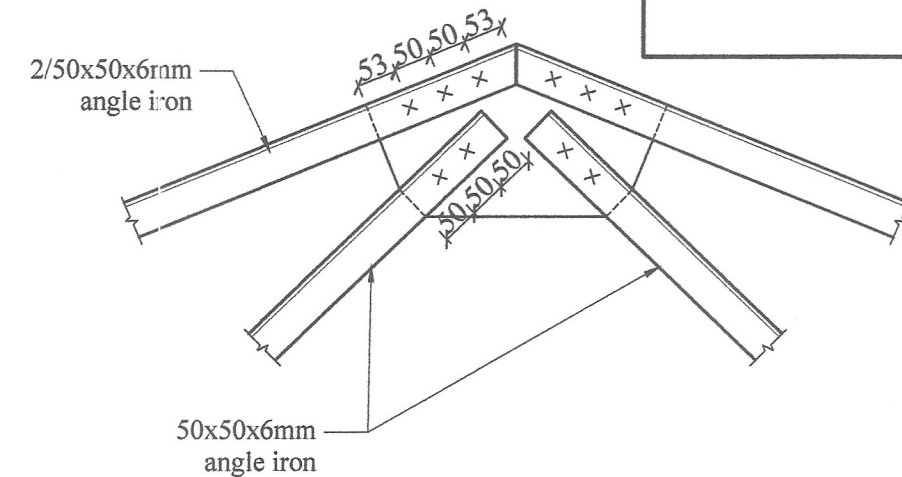
**PLAN AT - A**

Scale - 1:10



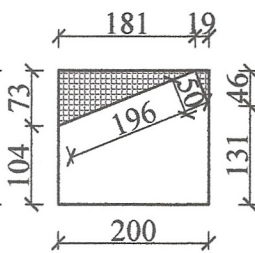
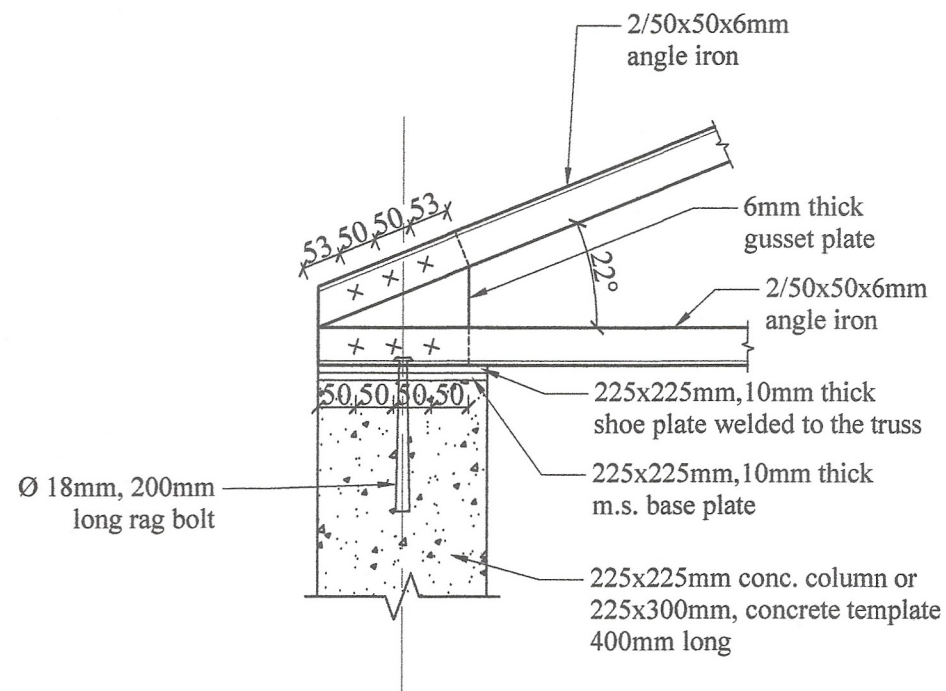
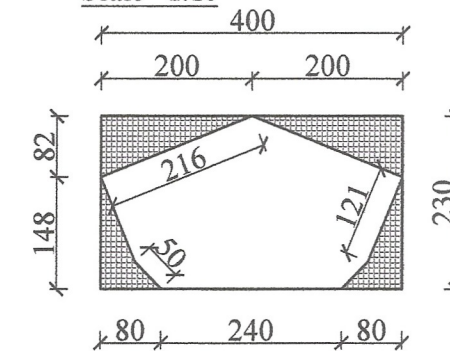
**DETAIL AT - B**

Scale - 1:10



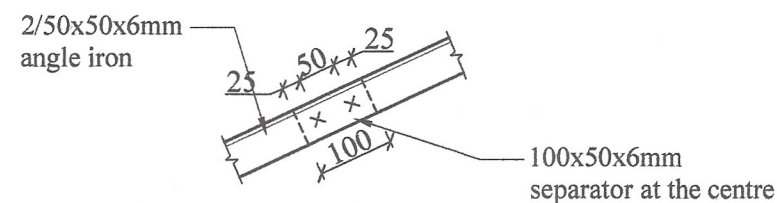
**CROWN DETAIL**

Scale - 1:10



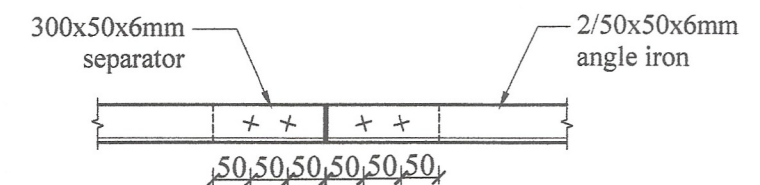
**DETAIL AT - A**

Scale - 1:10



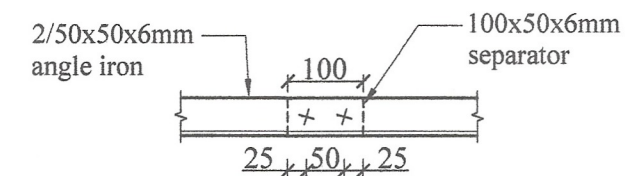
**DETAIL AT - C**

Scale - 1:10



**DETAIL AT - D**

Scale - 1:10



**DETAIL AT - E**

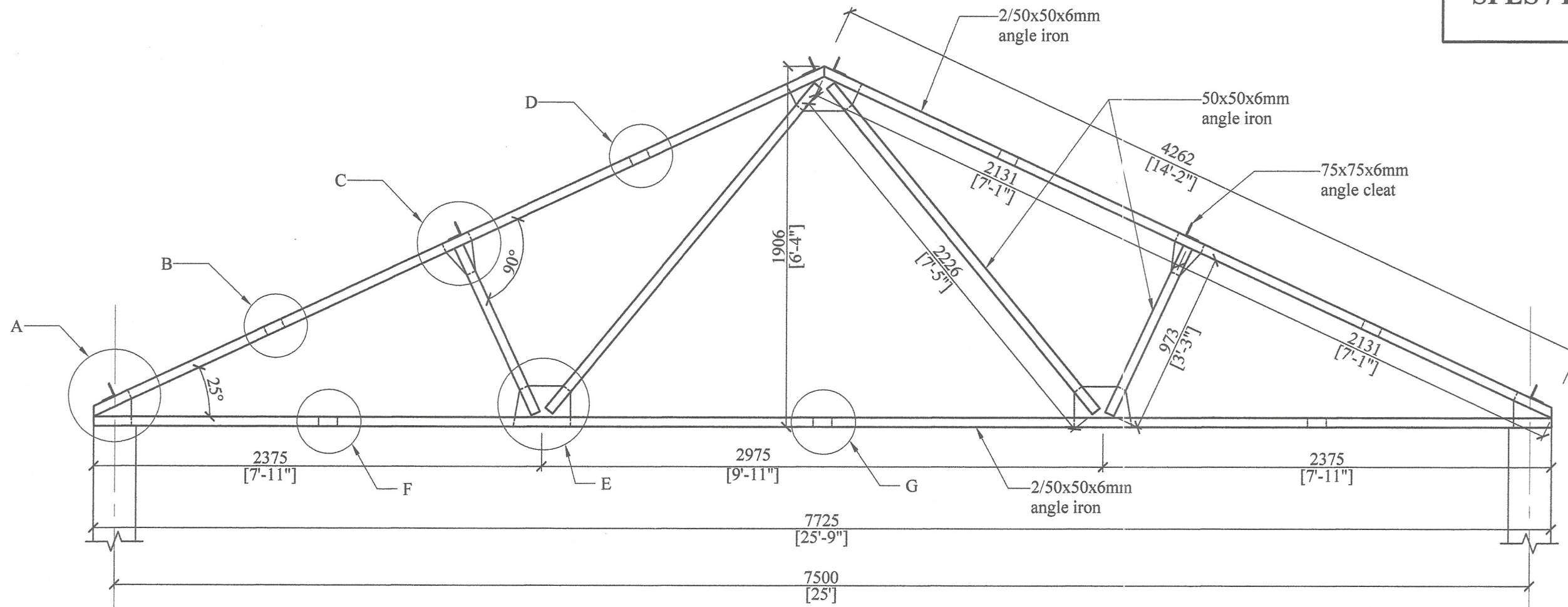
Scale - 1:10

No any alteration is allowed without due permission of DCS(Eng). Any unauthorized alteration is subjected to have disciplinary action. Re-production is not permitted.  
DCS(Eng)

**STEEL ROOF TRUSS SPAN 7.5m (25'- 0''), PITCH 22°  
FOR ASBESTOS SHEET ROOF.  
(WITHOUT EAVE)**

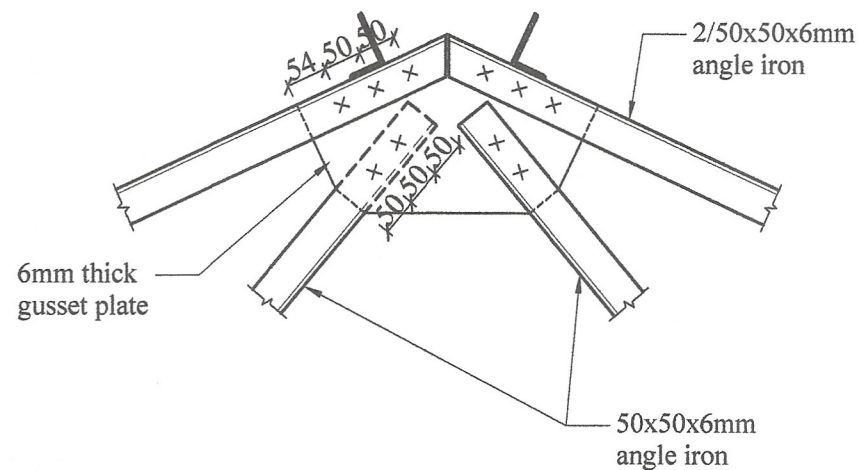
All right reserved this work or any part of there of may not be reproduced without written permission of the Engineering Services Office of Southern Provincial Council.

Sheet No : 02	Checked By (S.P. Wickramasinghe)	<b>DETAILED DRAWING (RATE ANALYSIS)</b>  ENGINEERING SERVICES OFFICE, SOUTHERN PROVINCIAL COUNCIL, GALLE. Tel: 08122-42761 / 08122-42765 / 08122-40181 / 08122-33151 / 08122-48822 / 080208745 Fax: 08122-42761 / 08122-42765 / 08122-40181 / 08122-33151 E-mail: engserv@spc.lk
Drawing No : SPES / Rate 23 / Ir - 05	D.O.A. (G.N.R. Ekanayake)	
Scale : 1:10	Engineer Assistant (H.K.S. Prasaditha)	
Date : 2023-08-04	Design Engineer (Eng. N.M.S. Muralidharan)	
Drawn By : Monali	Director (Engineering) (Eng. C.B. Abeyaratne)	



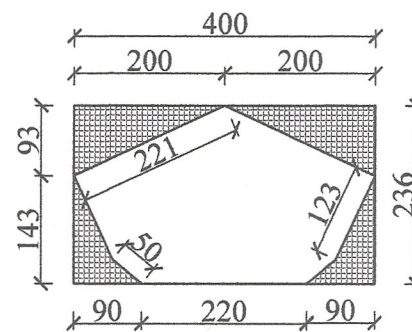
**ROOF TRUSS**

Scale - 1:25



**CROWN DETAIL**

Scale - 1:10



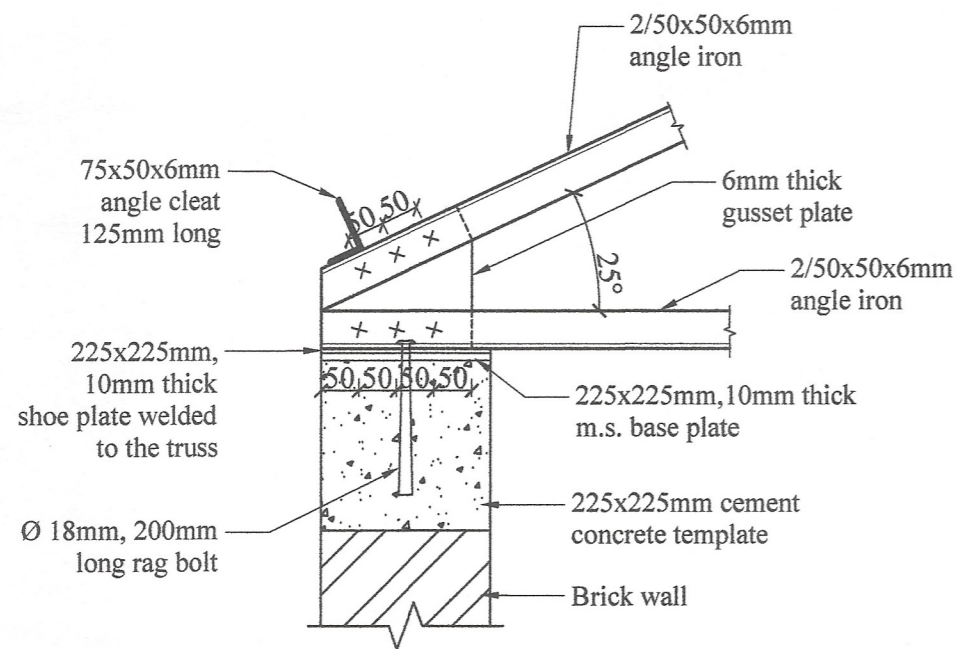
- Note:-**
1. Pitch of roof 25° for calicut tiles.
  2. All gusset plates to be 6mm thick.
  3. All bolts to be Ø12.5mm unless otherwise specified.
  4. Max spacing of trusses to be 3m (10'- 0").
  5. Provide 150x75mm purlins at center and lower edge and 175x50mm purlins at crown for 3m spacing of trusses
  6. 75x75x6mm angle cleats 125mm long to be welded as shown with 2 nos. of Ø12.5mm holes on vertical leg.
  7. 225x225mm 1:3:6 (25) concrete template 750mm long to be provided if the truss to be placed on a brick wall.

No any alteration is allowed without due permission of DCS(Eng). Any unauthorized alteration is subjected to have disciplinary action. Re-production is not permitted.  
DCS(Eng)

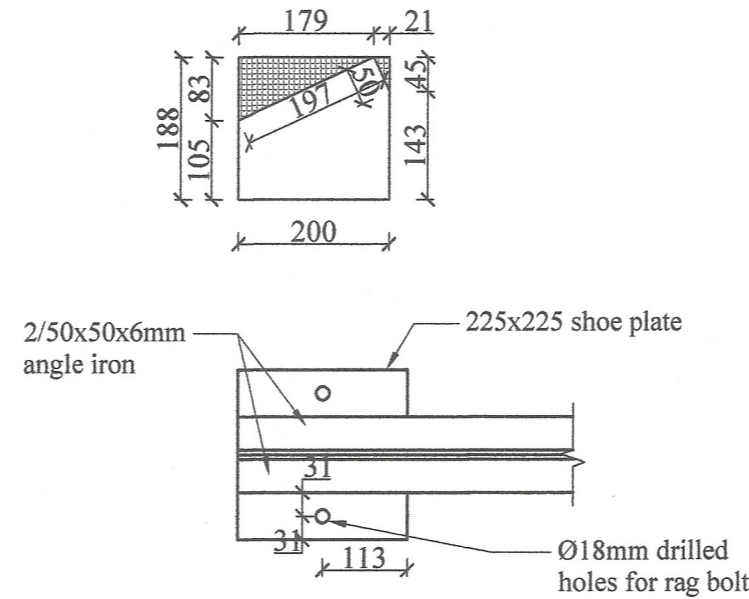
**STEEL ROOF TRUSS SPAN 7.5m (25'- 0"), PITCH 25°  
FOR CALICUT TILE ROOF.  
(WITHOUT EAVE)**

All right reserved this work or any part of there of may not be reproduced without written permission of the Engineering Services Office of Southern Provincial Council.

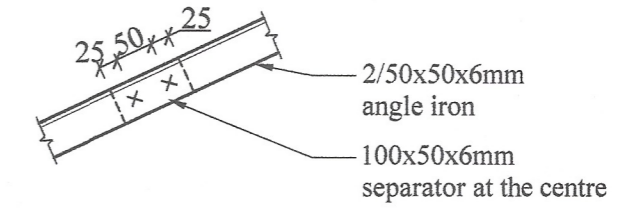
Sheet No : 01	Checked By (S.P. Weerasinghe) : <i>S.P. Weerasinghe</i>	<b>DETAILED DRAWING (RATE ANALYSIS)</b>
Drawing No : SPES / Rate 23 / Ir - 06	D.O.A. (GNR, Kandy) : <i>C.P. Doshi</i>	
Scale : 1:25	Engineer Assistant (H.K.S. Perera) : <i>H.K.S. Perera</i>	<b>ENGINEERING SERVICES OFFICE</b> SOUTHERN PROVINCIAL COUNCIL, GALLE. Tel: 9122-42781 / 9122-42782 / 9122-42783 / 9122-42784 / 9122-42785 / 9122-42786 / 9122-42787 / 9122-42788 / 9122-42789 / 9122-42790 / 9122-42791 / 9122-42792 / 9122-42793 / 9122-42794 / 9122-42795 / 9122-42796 / 9122-42797 / 9122-42798 / 9122-42799 / 9122-42800 / 9122-42801 / 9122-42802 / 9122-42803 / 9122-42804 / 9122-42805 / 9122-42806 / 9122-42807 / 9122-42808 / 9122-42809 / 9122-42810 / 9122-42811 / 9122-42812 / 9122-42813 / 9122-42814 / 9122-42815 / 9122-42816 / 9122-42817 / 9122-42818 / 9122-42819 / 9122-42820 / 9122-42821 / 9122-42822 / 9122-42823 / 9122-42824 / 9122-42825 / 9122-42826 / 9122-42827 / 9122-42828 / 9122-42829 / 9122-42830 / 9122-42831 / 9122-42832 / 9122-42833 / 9122-42834 / 9122-42835 / 9122-42836 / 9122-42837 / 9122-42838 / 9122-42839 / 9122-42840 / 9122-42841 / 9122-42842 / 9122-42843 / 9122-42844 / 9122-42845 / 9122-42846 / 9122-42847 / 9122-42848 / 9122-42849 / 9122-42850 / 9122-42851 / 9122-42852 / 9122-42853 / 9122-42854 / 9122-42855 / 9122-42856 / 9122-42857 / 9122-42858 / 9122-42859 / 9122-42860 / 9122-42861 / 9122-42862 / 9122-42863 / 9122-42864 / 9122-42865 / 9122-42866 / 9122-42867 / 9122-42868 / 9122-42869 / 9122-42870 / 9122-42871 / 9122-42872 / 9122-42873 / 9122-42874 / 9122-42875 / 9122-42876 / 9122-42877 / 9122-42878 / 9122-42879 / 9122-42880 / 9122-42881 / 9122-42882 / 9122-42883 / 9122-42884 / 9122-42885 / 9122-42886 / 9122-42887 / 9122-42888 / 9122-42889 / 9122-42890 / 9122-42891 / 9122-42892 / 9122-42893 / 9122-42894 / 9122-42895 / 9122-42896 / 9122-42897 / 9122-42898 / 9122-42899 / 9122-42900 / 9122-42901 / 9122-42902 / 9122-42903 / 9122-42904 / 9122-42905 / 9122-42906 / 9122-42907 / 9122-42908 / 9122-42909 / 9122-42910 / 9122-42911 / 9122-42912 / 9122-42913 / 9122-42914 / 9122-42915 / 9122-42916 / 9122-42917 / 9122-42918 / 9122-42919 / 9122-42920 / 9122-42921 / 9122-42922 / 9122-42923 / 9122-42924 / 9122-42925 / 9122-42926 / 9122-42927 / 9122-42928 / 9122-42929 / 9122-42930 / 9122-42931 / 9122-42932 / 9122-42933 / 9122-42934 / 9122-42935 / 9122-42936 / 9122-42937 / 9122-42938 / 9122-42939 / 9122-42940 / 9122-42941 / 9122-42942 / 9122-42943 / 9122-42944 / 9122-42945 / 9122-42946 / 9122-42947 / 9122-42948 / 9122-42949 / 9122-42950 / 9122-42951 / 9122-42952 / 9122-42953 / 9122-42954 / 9122-42955 / 9122-42956 / 9122-42957 / 9122-42958 / 9122-42959 / 9122-42960 / 9122-42961 / 9122-42962 / 9122-42963 / 9122-42964 / 9122-42965 / 9122-42966 / 9122-42967 / 9122-42968 / 9122-42969 / 9122-42970 / 9122-42971 / 9122-42972 / 9122-42973 / 9122-42974 / 9122-42975 / 9122-42976 / 9122-42977 / 9122-42978 / 9122-42979 / 9122-42980 / 9122-42981 / 9122-42982 / 9122-42983 / 9122-42984 / 9122-42985 / 9122-42986 / 9122-42987 / 9122-42988 / 9122-42989 / 9122-42990 / 9122-42991 / 9122-42992 / 9122-42993 / 9122-42994 / 9122-42995 / 9122-42996 / 9122-42997 / 9122-42998 / 9122-42999 / 9122-43000
Date : 2023-08-04	Design Engineer (Eng. N.M.S. Manjula) : <i>N.M.S. Manjula</i>	
Drawn By : Monali	Director (Engineering) (Eng. C.B. Abeyaratne) : <i>C.B. Abeyaratne</i>	



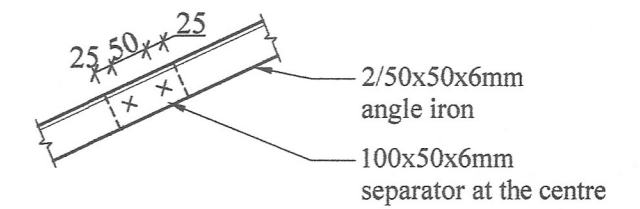
**DETAIL AT - A**  
Scale - 1:10



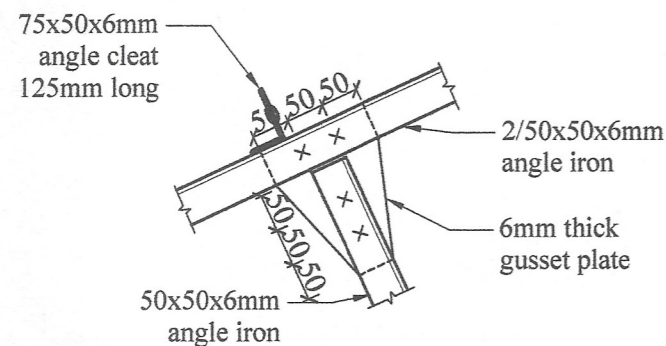
**PLAN AT  
DETAIL - A**



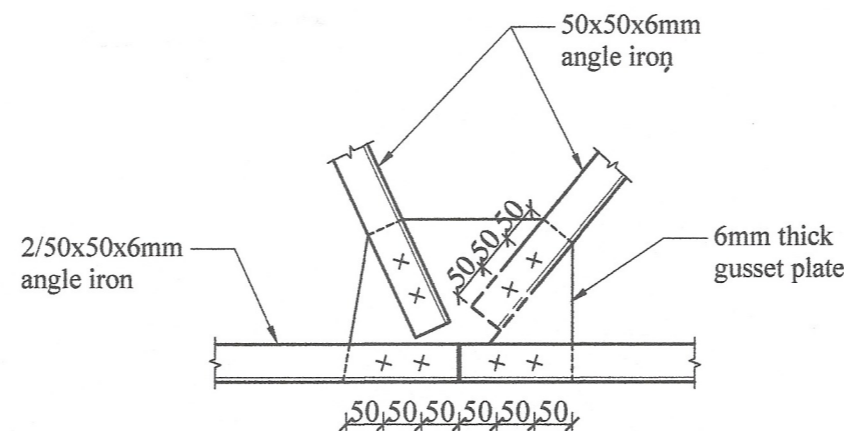
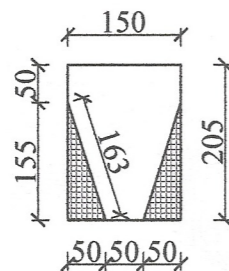
**DETAIL AT - B**  
Scale - 1:10



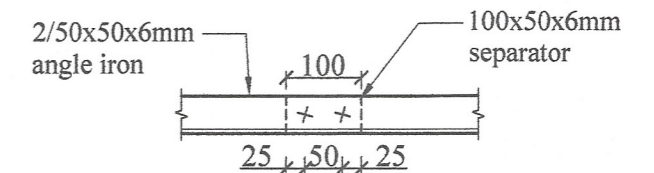
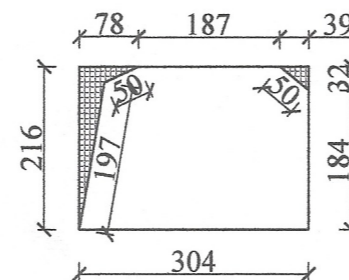
**DETAIL AT - D**  
Scale - 1:10



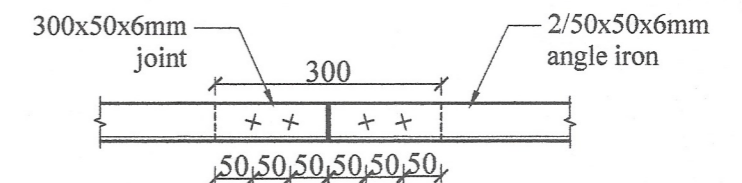
**DETAIL AT - C**  
Scale - 1:10



**DETAIL AT - E**  
Scale - 1:10



**DETAIL AT - F**  
Scale - 1:10



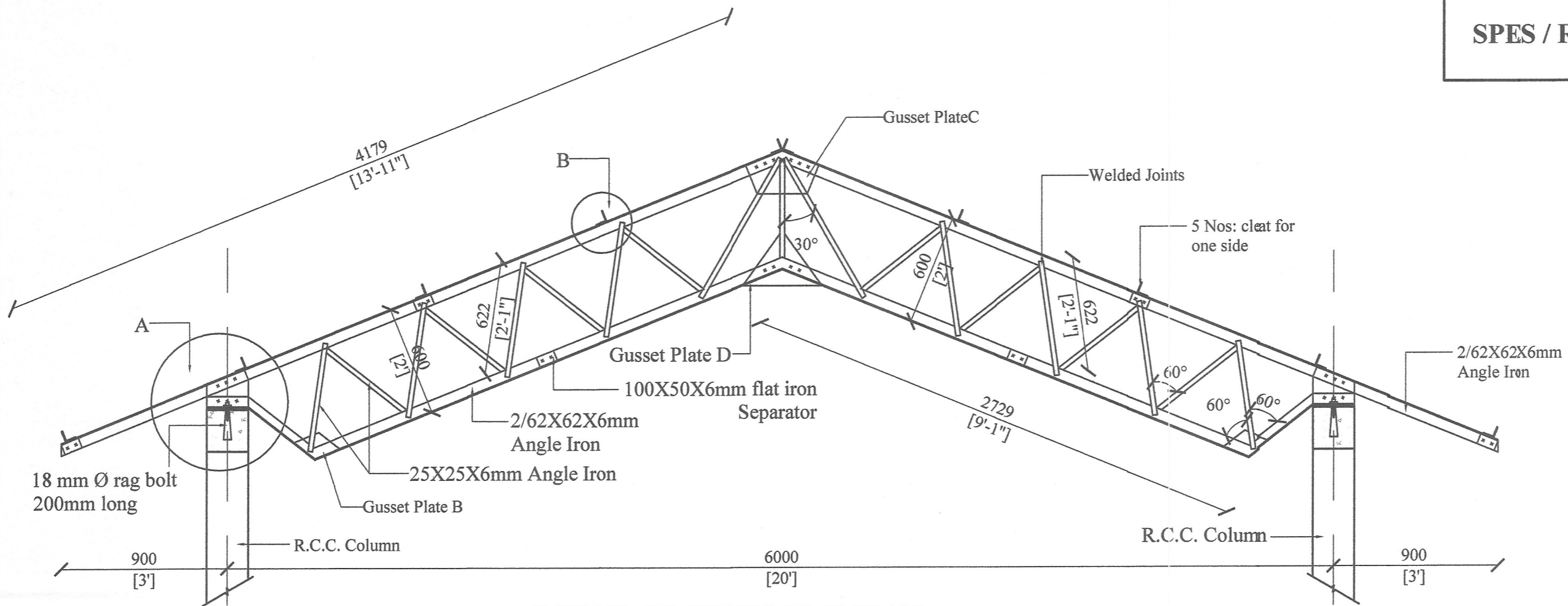
**DETAIL AT - G**  
Scale - 1:10

No any alteration is allowed without due permission of DCS(Eng). Any unauthorized alteration is subjected to have disciplinary action. Re-production is not permitted.  
DCS(Eng)

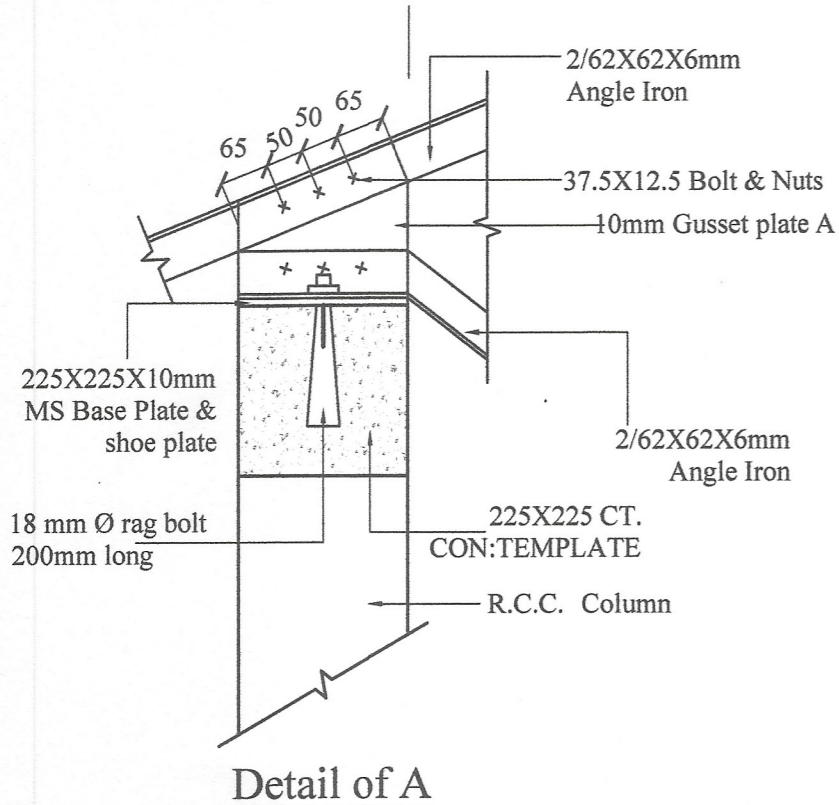
**STEEL ROOF TRUSS SPAN 7.5m (25'- 0''), PITCH 25°  
FOR CALICUT TILE ROOF.  
(WITHOUT EAVE)**

All right reserved this work or any part of there of may not be reproduced without written permission of the Engineering Services Office of Southern Provincial Council.

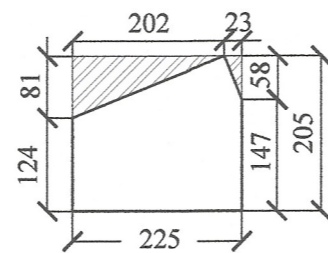
Sheet No : 02	Checked By (S.P. Weddunilage) : <i>S.P. Weddunilage</i>	<b>DETAILED DRAWING (RATE ANALYSIS)</b>
Drawing No : SPES / Rate 23 / Ir - 06	D.O.A. (G.N.R. Ranapala) : <i>C. Dashik</i>	
Scale : 1:10	Engineer Assistant (H.E.S. Perumbathala) : <i>K. K. K.</i>	
Date : 2023-08-04	Design Engineer (Eng. N.M.S. Manimale) : <i>N. Manimale</i>	
Drawn By : Moolali	Director (Engineering) (Eng. C.B. Abeyaratne) : <i>C.B. Abeyaratne</i>	
		ENGINEERING SERVICES OFFICE. SOUTHERN PROVINCIAL COUNCIL, GALLE. Tel: 09122-42786 / 09122-42789 / 09122-49191 / 09122-50125 / 09122-48821 / 0902030745 Fax: 09122-42786 / 09122-42789 / 09122-49191 / 09122-51125 E-mail: engserv@spc.gov.lk



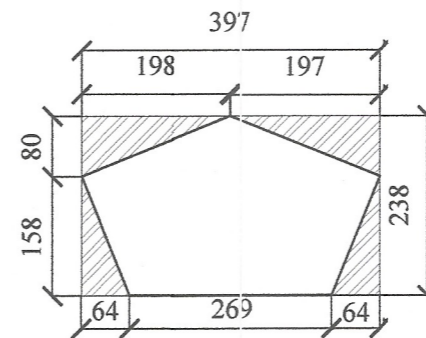
**DETAIL OF TRUSS 20'-0" SPAN**



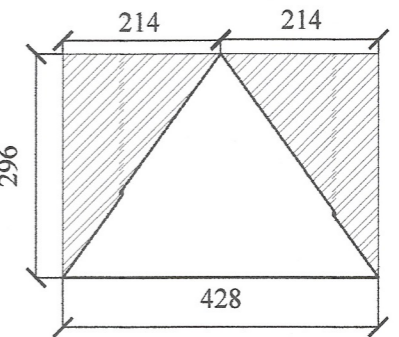
**Detail of A**



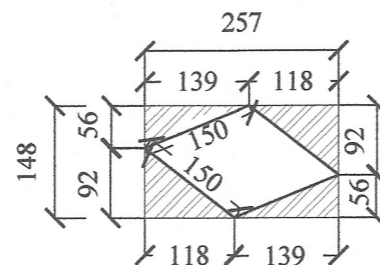
**Gusset plate A**



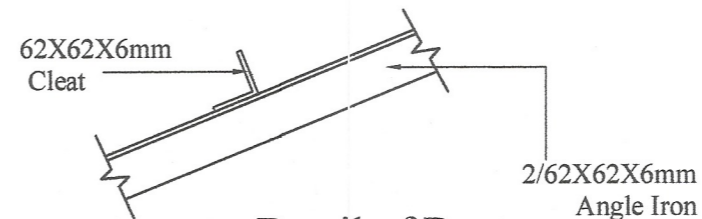
**Gusset plate C**



**Gusset plate D**



**Gusset plate B**



**Detail of B**

No any alteration is allowed without due permission of DCS(Eng). Any unauthorized alteration is subjected to have disciplinary action. Re-production is not permitted.  
DCS(Eng)

**WEB TRUSS SPAN 6m (20'-0"), PITCH 22°  
FOR ASBESTOS SHEET ROOF WITH ANGLE IRON PURLING**

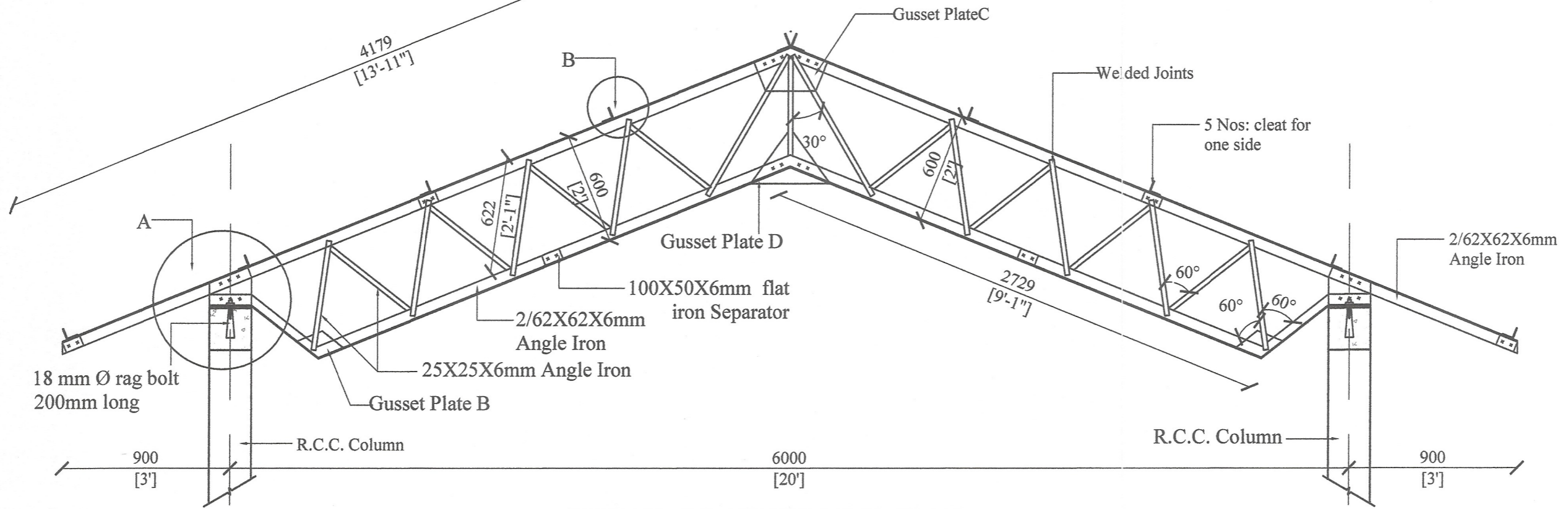
All right reserved this work or any part of there of may not be reproduced without written permission of the Engineering Services Office of Southern Provincial Council.

Sheet No : 01	Checked By : <i>S. Jayasinghe</i>
Drawing No : SPES / Rate 23 / IR-07	D.O.A. : <i>C. Rajapaksa</i>
Scale : 1:25	Engineer Assistant : <i>K. Jayasinghe</i>
Date : 2023-08-04	Design Engineer : <i>N. M. M. M. M. M.</i>
Drawn By : <i>S. K. K.</i>	Director (Engineering) : <i>S. K. K.</i>

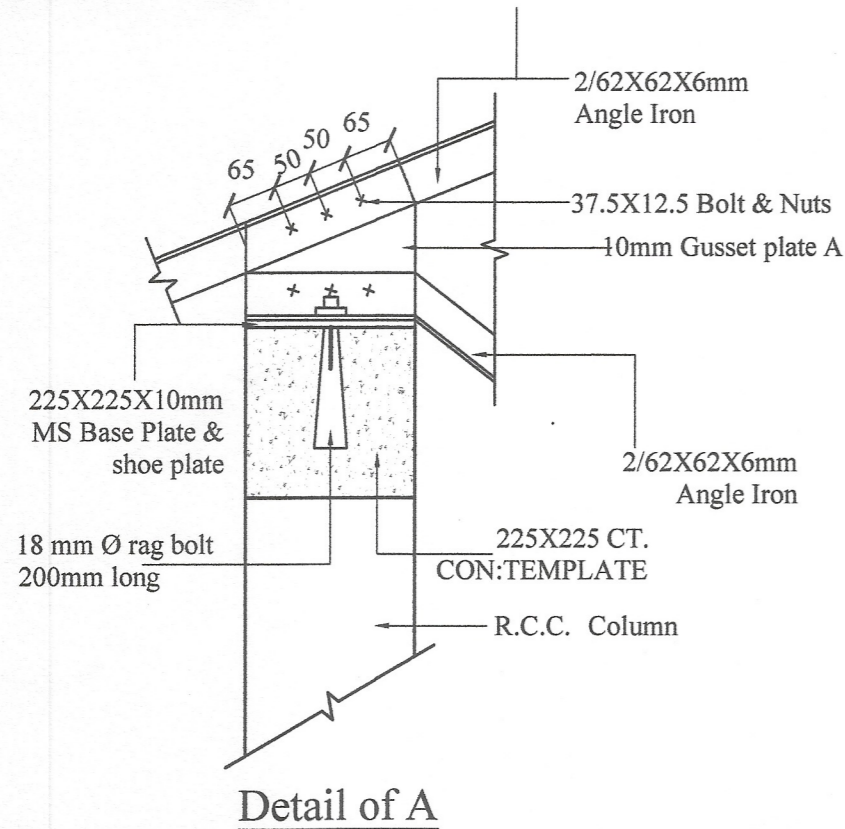
**DETAILED DRAWING  
(RATE ANALYSIS)**

**ENGINEERING SERVICES OFFICE,  
SOUTHERN PROVINCIAL COUNCIL, GALLE.**

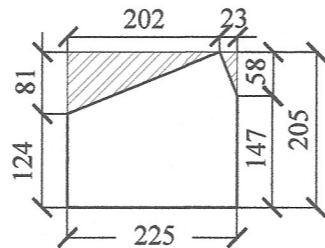
Tel: 0112-42701 / 0112-42702 / 0112-42703 / 0112-42704 / 0112-42705 / 0112-42706 / 0112-42707 / 0112-42708 / 0112-42709 / 0112-42710 / 0112-42711 / 0112-42712 / 0112-42713 / 0112-42714 / 0112-42715 / 0112-42716 / 0112-42717 / 0112-42718 / 0112-42719 / 0112-42720 / 0112-42721 / 0112-42722 / 0112-42723 / 0112-42724 / 0112-42725 / 0112-42726 / 0112-42727 / 0112-42728 / 0112-42729 / 0112-42730 / 0112-42731 / 0112-42732 / 0112-42733 / 0112-42734 / 0112-42735 / 0112-42736 / 0112-42737 / 0112-42738 / 0112-42739 / 0112-42740 / 0112-42741 / 0112-42742 / 0112-42743 / 0112-42744 / 0112-42745 / 0112-42746 / 0112-42747 / 0112-42748 / 0112-42749 / 0112-42750 / 0112-42751 / 0112-42752 / 0112-42753 / 0112-42754 / 0112-42755 / 0112-42756 / 0112-42757 / 0112-42758 / 0112-42759 / 0112-42760 / 0112-42761 / 0112-42762 / 0112-42763 / 0112-42764 / 0112-42765 / 0112-42766 / 0112-42767 / 0112-42768 / 0112-42769 / 0112-42770 / 0112-42771 / 0112-42772 / 0112-42773 / 0112-42774 / 0112-42775 / 0112-42776 / 0112-42777 / 0112-42778 / 0112-42779 / 0112-42780 / 0112-42781 / 0112-42782 / 0112-42783 / 0112-42784 / 0112-42785 / 0112-42786 / 0112-42787 / 0112-42788 / 0112-42789 / 0112-42790 / 0112-42791 / 0112-42792 / 0112-42793 / 0112-42794 / 0112-42795 / 0112-42796 / 0112-42797 / 0112-42798 / 0112-42799 / 0112-42800



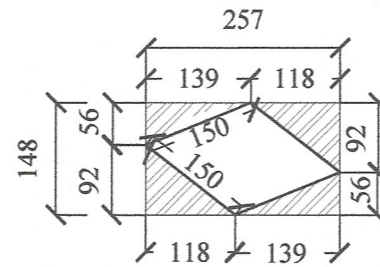
DETAIL OF TRUSS 20'-0" SPAN



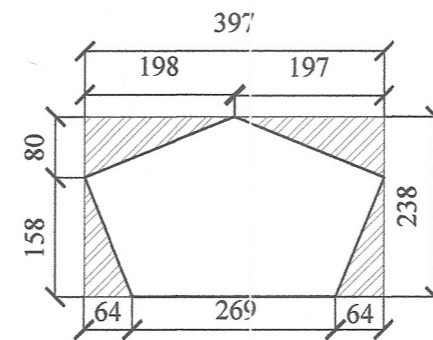
Detail of A



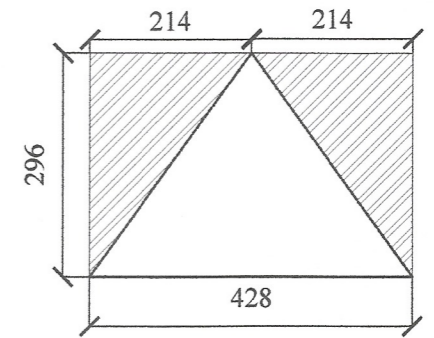
Gusset plate A



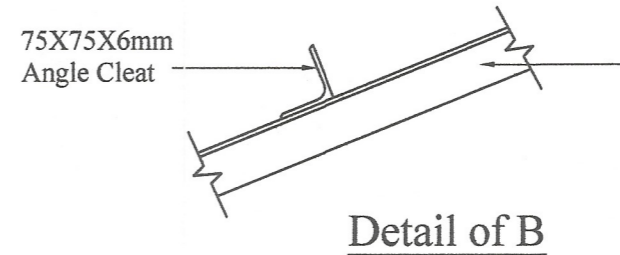
Gusset plate B



Gusset plate C



Gusset plate D



Detail of B

No alteration is allowed without due permission of DCS(Eng). Any unauthorized alteration is subjected to have disciplinary action. Re-production is not permitted.  
DCS(Eng)

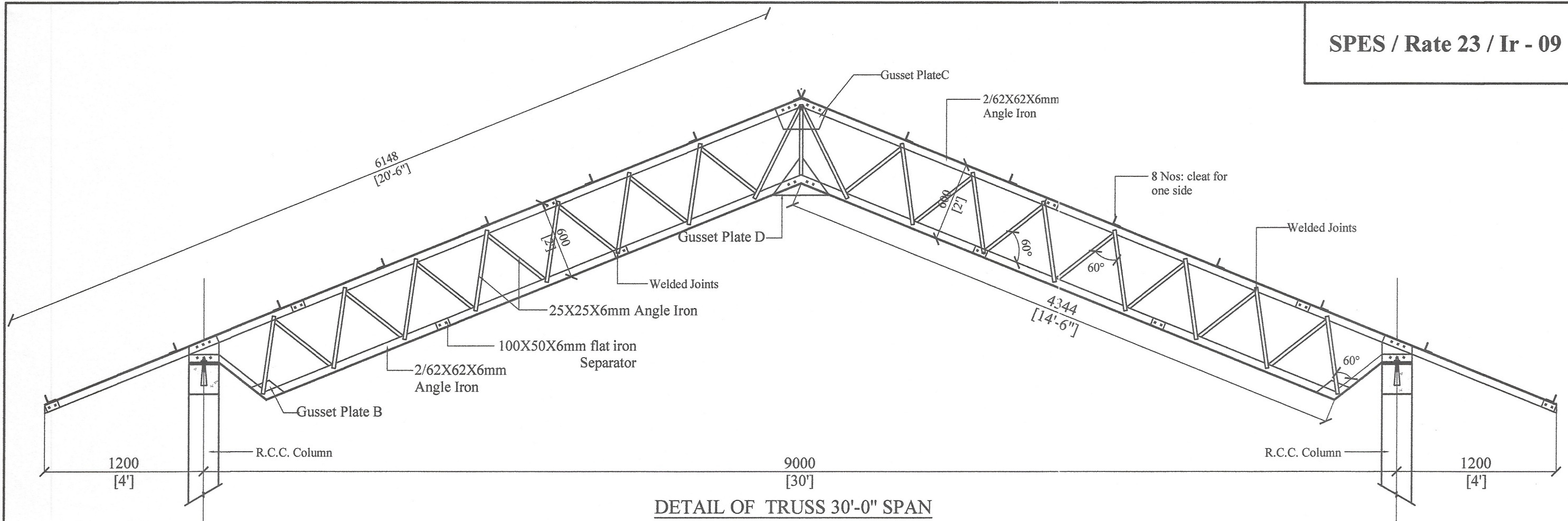
**WEB TRUSS SPAN 6m (20'-0''), PITCH 22°  
FOR ASBESTOS SHEET ROOF WITH TIMBER PURLING**

All right reserved this work or any part of there of may not be reproduced without written permission of the Engineering Services Office of Southern Provincial Council.

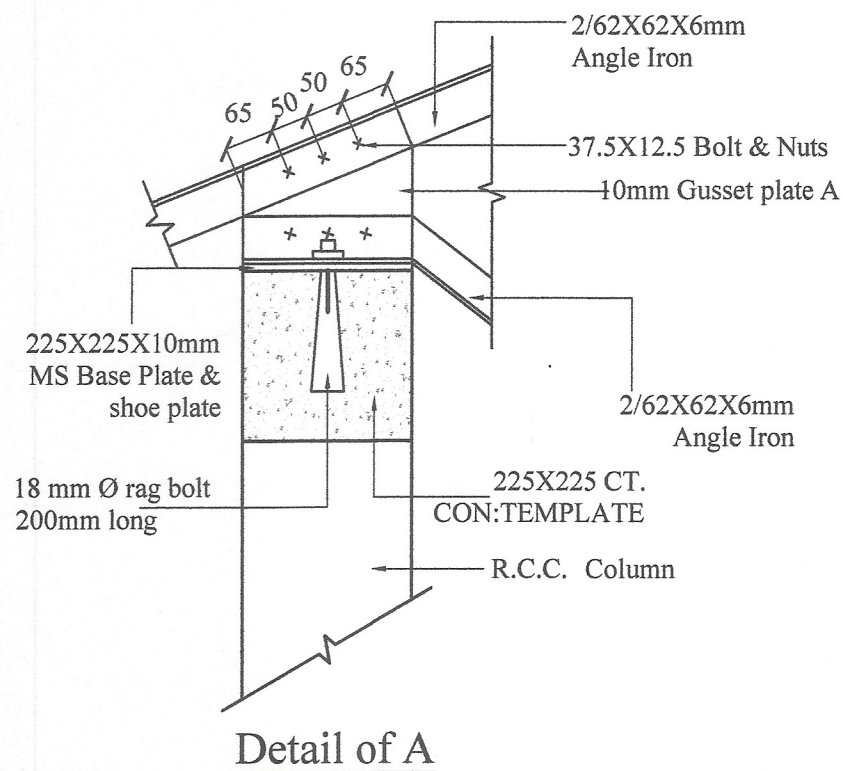
Sheet No : 01	Checked By : <i>Sygam</i> (S.P. Weerasinghe)
Drawing No : SPES / Rate 23 / IR - 08	D.O.A. : <i>C.P.Rashid</i> (G.N.R. Ekanayake)
Scale : 1 : 25	Engineer Assistant : <i>[Signature]</i> (H.K.S. Perera)
Date : 2023-08-04	Design Engineer : <i>[Signature]</i> (Eng. N.M.S. Manasinghe)
Drawn By : <i>[Signature]</i> (S. Manali)	Director (Engineering) : <i>[Signature]</i> (Eng. C.B. Abeyaratne)

**DETAILED DRAWING  
(RATE ANALYSIS)**

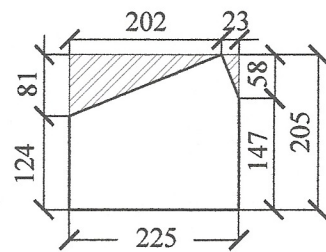
**ENGINEERING SERVICES OFFICE.**  
SOUTHERN PROVINCIAL COUNCIL, GALLE.  
Tel: 01122-42786 / 01122-42785 / 01122-40161 / 01122-51125 / 01122-42382 / 082265745  
Fax: 01122-42786 / 01122-42785 / 01122-40161 / 01122-51125 E-mail: engserv@spc.gov.lk



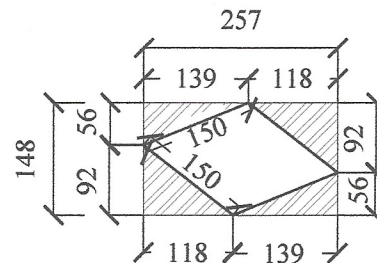
DETAIL OF TRUSS 30'-0" SPAN



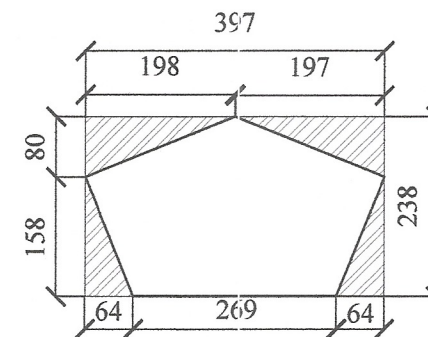
Detail of A



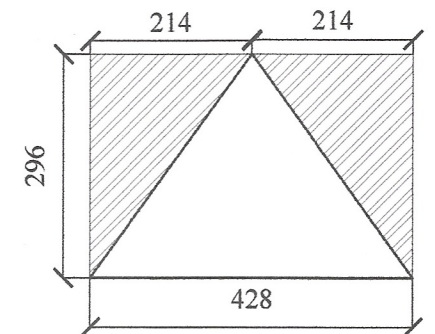
Gusset plate A



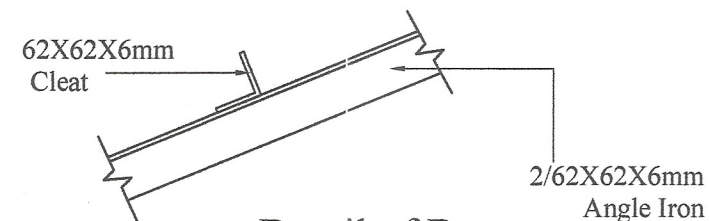
Gusset plate B



Gusset plate C



Gusset plate D



Detail of B

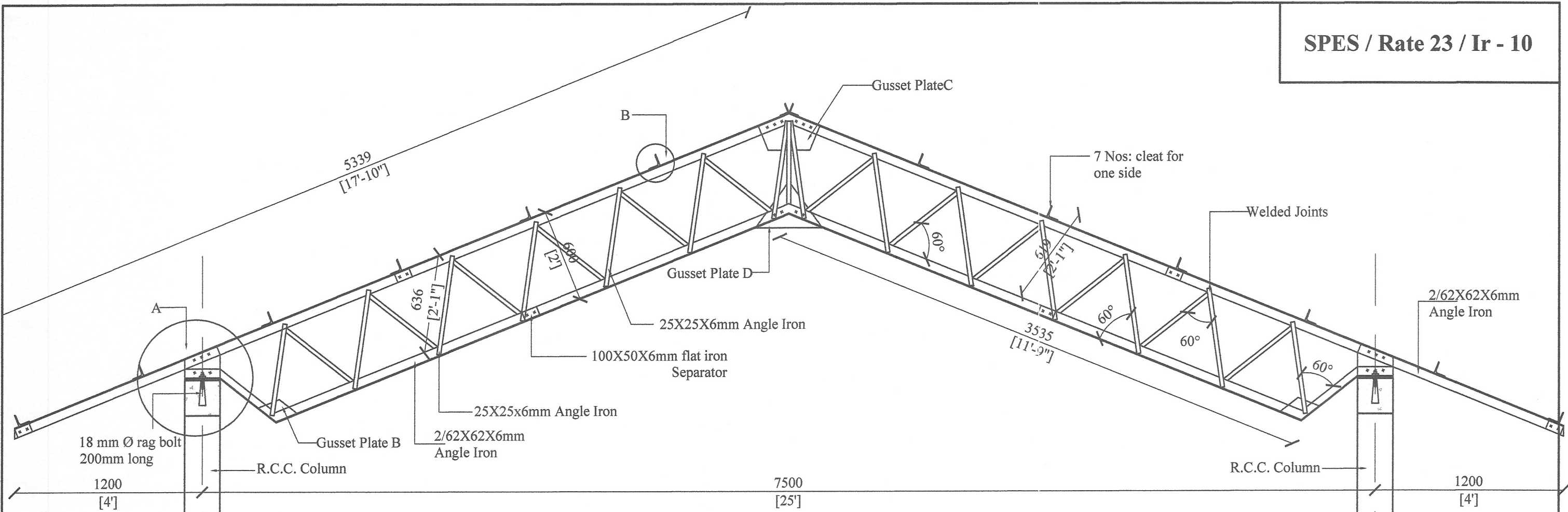
No any alteration is allowed without due permission of DCS(Eng). Any unauthorized alteration is subjected to have disciplinary action. Re-production is not permitted.  
DCS(Eng)

**WEB TRUSS SPAN 9m (30'-0''), PITCH 22°  
FOR ASBESTOS SHEET ROOF**

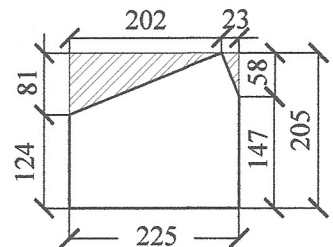
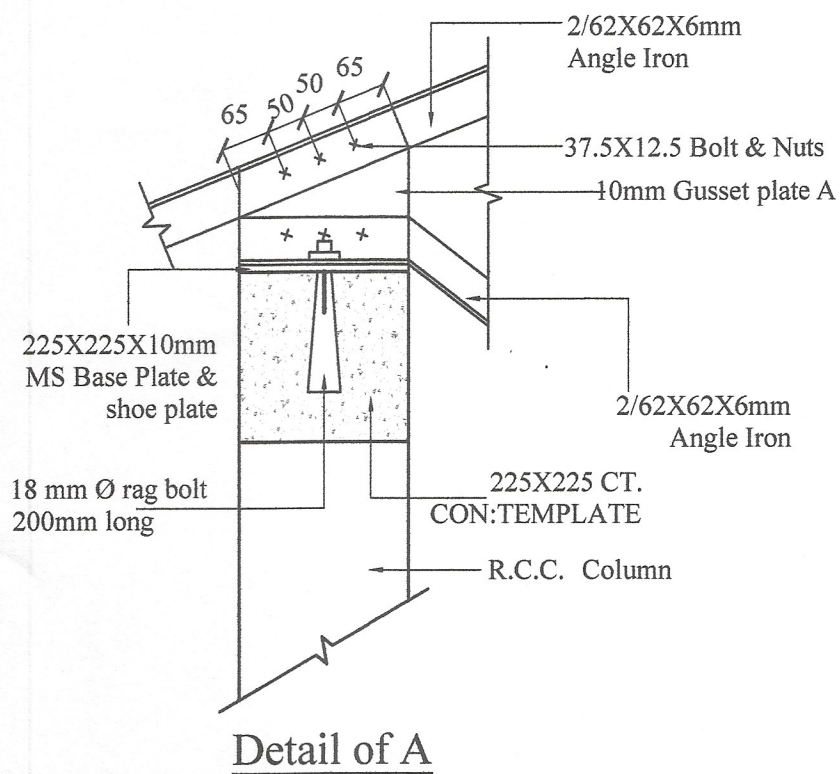
All right reserved this work or any part of there of may not be reproduced without written permission of the Engineering Services Office of Southern Provincial Council.

Sheet No : 01	Checked By : <i>Shyama</i> (S.P. Wehakkingsa)	<b>DETAILED DRAWING (RATE ANALYSIS)</b>
Drawing No : SPES / Rate 23 / IR - 09	D.O.A. : <i>C.P. Deshik</i> (G.N.A. Ekanayake)	
Scale : 1:25	Engineer Assistant : <i>[Signature]</i> (R.E.S. Perera)	<b>ENGINEERING SERVICES OFFICE. SOUTHERN PROVINCIAL COUNCIL, GALLE.</b>
Date : 2023-08-04	Design Engineer : <i>[Signature]</i> (Eng. N.M.S. Manasinghe)	
Drawn By : <i>[Signature]</i> (S. Mani)	Director (Engineering) : <i>[Signature]</i> (Eng. C.B. Abeyaratne)	

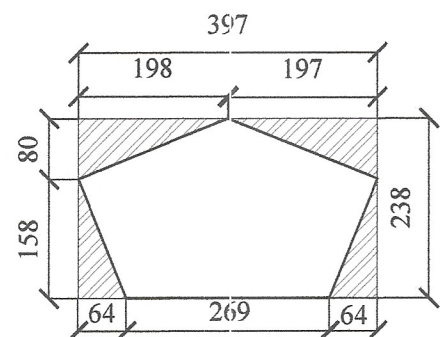
Tel: 09122-42781 / 09122-42789 / 09122-40181 / 09122-51125 / 09122-40221 / 09122-50145  
Fax: 09122-42781 / 09122-42787 / 09122-40181 / 09122-51125 E-mail: engserv@spco.lk



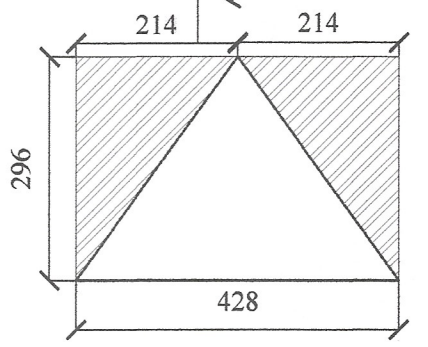
**DETAIL OF TRUSS 25'-0" SPAN**



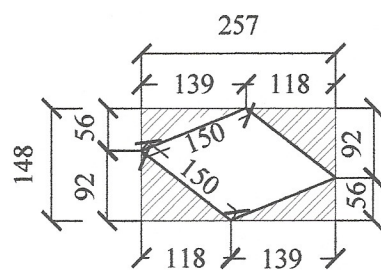
**Gusset plate A**



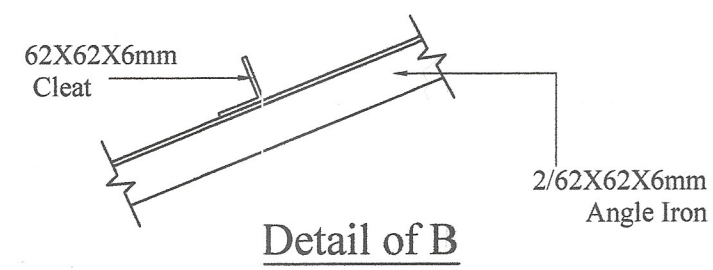
**Gusset plate C**



**Gusset plate D**



**Gusset plate B**



**Detail of B**

No any alteration is allowed without due permission of DCS(Eng). Any unauthorized alteration is subjected to have disciplinary action. Re-production is not permitted.  
DCS(Eng)

**PROPOSED WEB TRUSS SPAN 7.5m (25'-0''), PITCH 22°  
FOR ASBESTOS SHEET ROOF WITH ANGLE IRON PURLING**

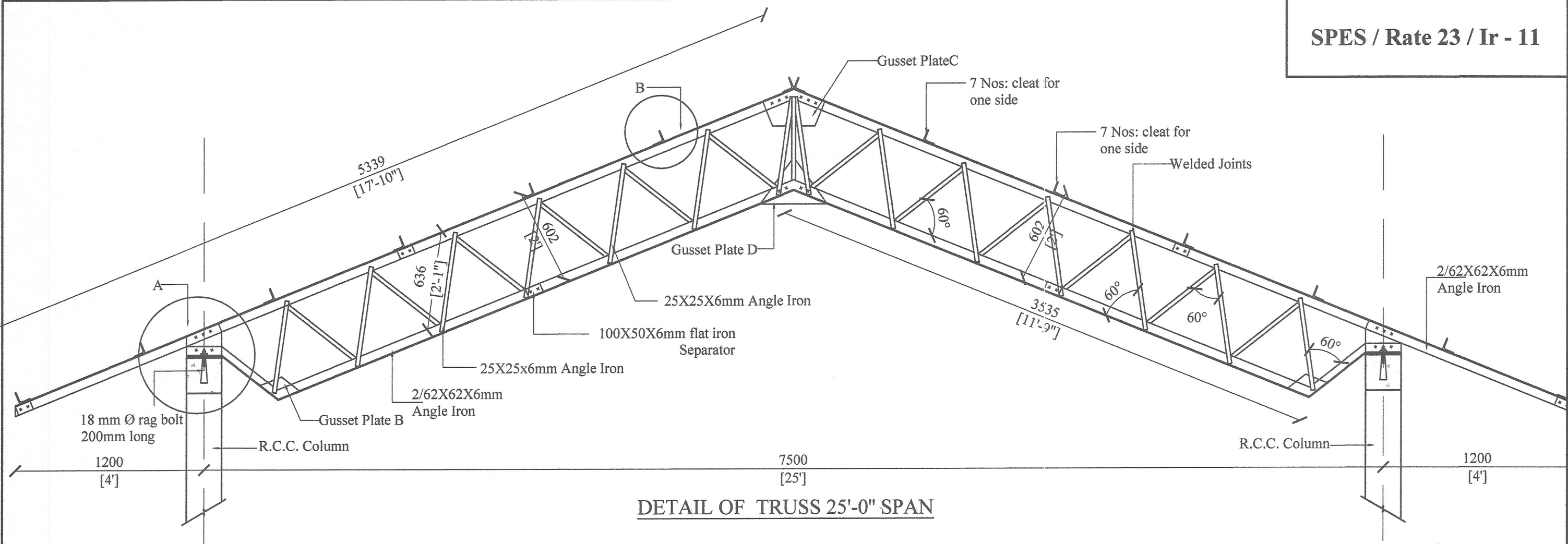
All right reserved this work or any part of there of may not be reproduced without written permission of the Engineering Services Office of Southern Provincial Council.

Sheet No : 01	Checked By (S.P. Wickramasinghe)
Drawing No : SPES / Rate 23 / IR - 10	D.O.A. (G.N.R. Ekanayake)
Scale : 1 : 25	Engineer Assistant (H.K.S. Premaratne)
Date : 2023-08-04	Design Engineer (Eng. N.M.S. Manasinghe)
Drawn By : (S. Manali)	Director (Engineering) (Eng. C.B. Abeyaratne)

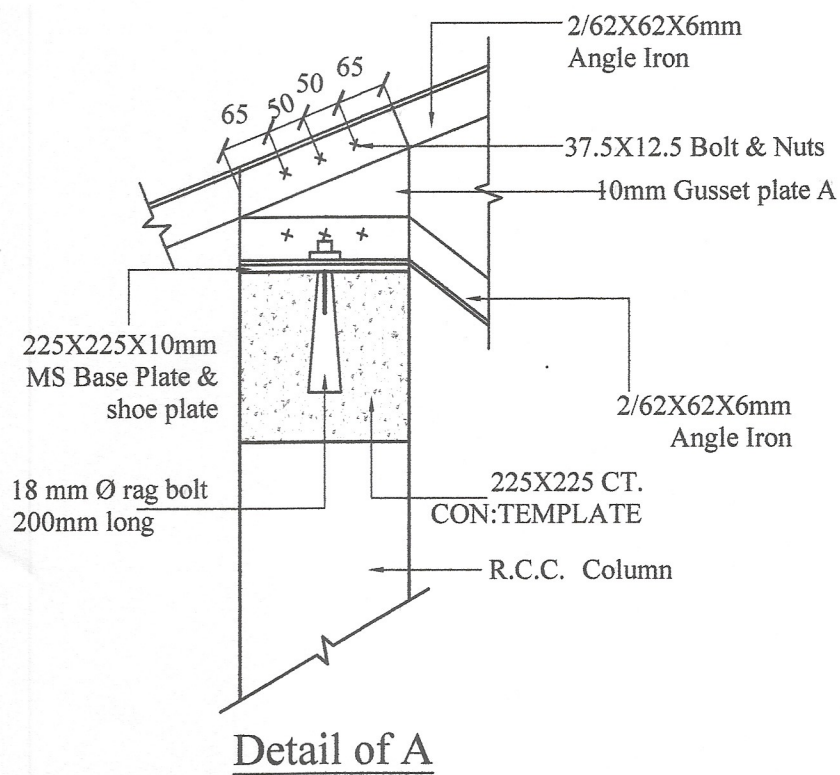
**DETAILED DRAWING (RATE ANALYSIS)**

**ENGINEERING SERVICES OFFICE.**  
SOUTHERN PROVINCIAL COUNCIL, GALLE.

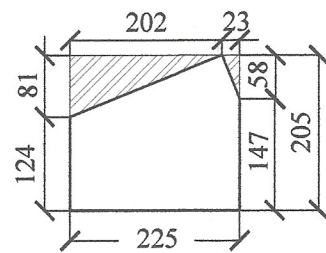
Tel: 09122-42786 / 09122-42789 / 09122-40161 / 09122-59155 / 09122-40232 / 09122-59145  
Fax: 09122-42781 / 09122-42785 / 09122-40161 / 09122-59155 E-mail: engserv@spc.gov.lk



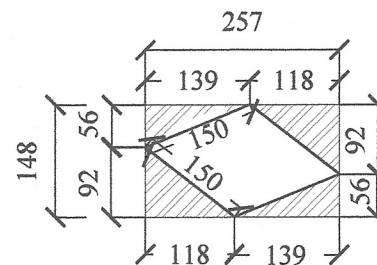
DETAIL OF TRUSS 25'-0" SPAN



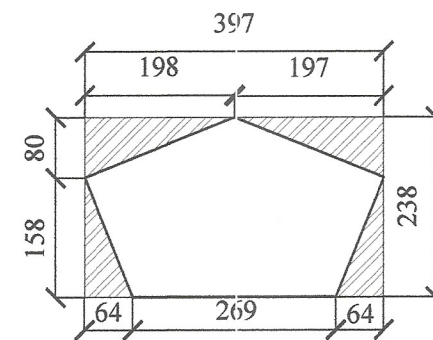
Detail of A



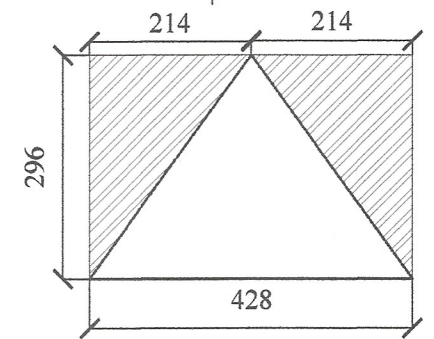
Gusset plate A



Gusset plate B

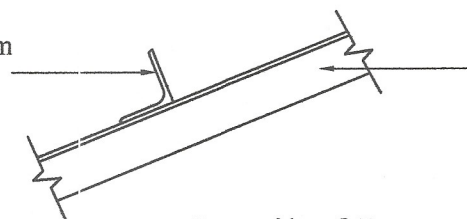


Gusset plate C



Gusset plate D

75X75X6mm Angle Cleat



Detail of B

2/62X62X6mm Angle Iron

No any alteration is allowed without due permission of DCS(Eng). Any unauthorized alteration is subjected to have disciplinary action. Re-production is not permitted.  
DCS(Eng)

**PROPOSED WEB TRUSS SPAN 7.5m (25'-0"), PITCH 22° FOR ASBESTOS SHEET ROOF WITH TIMBER PURLING**

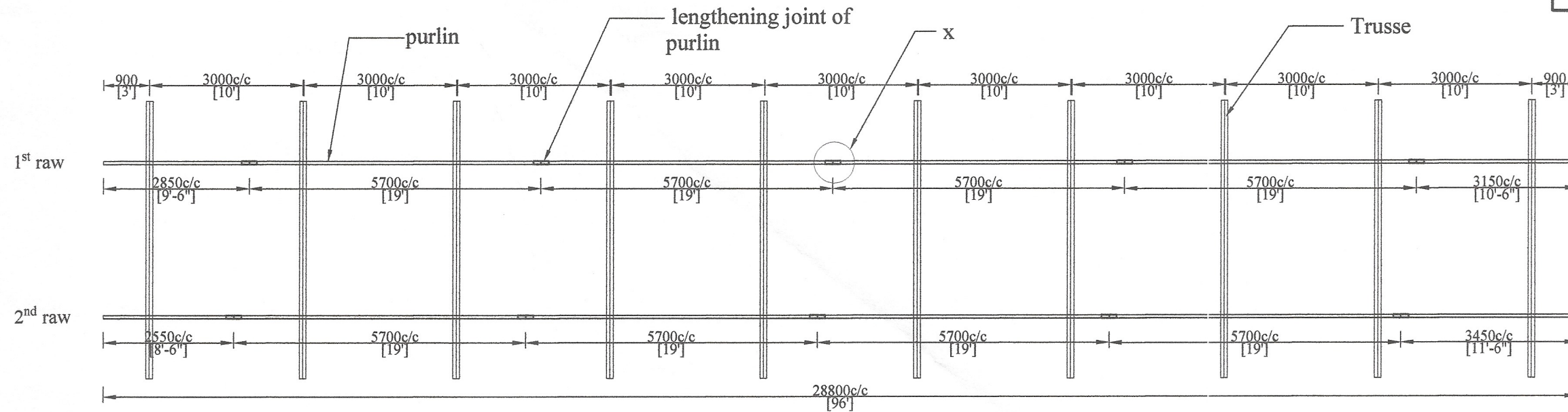
All right reserved this work or any part of there of may not be reproduced without written permission of the Engineering Services Office of Southern Provincial Council.

Sheet No : 01	Checked By : <i>Sryaw</i> (S.P. Weerasinghe)
Drawing No : SPES / Rate 23 / IR - 11	D.O.A. : <i>C.Dashit</i> (G.N.R. Ekanayake)
Scale : 1 : 25	Engineer Assistant : <i>K.D.</i> (H.K.S. Premaratne)
Date : 2023-08-04	Design Engineer : <i>N.Mog</i> (Eng. N.M.S. Mousangle)
Drawn By :	Director (Engineering) : <i>C.D.</i> (S. Manal)

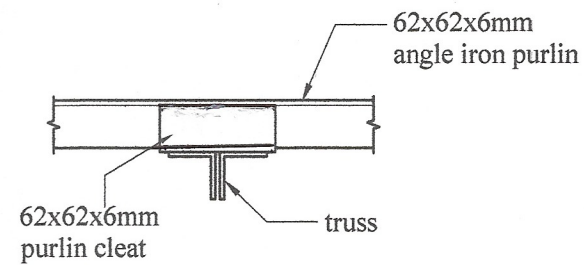
**DETAILED DRAWING (RATE ANALYSIS)**

**ENGINEERING SERVICES OFFICE, SOUTHERN PROVINCIAL COUNCIL, GALLE.**

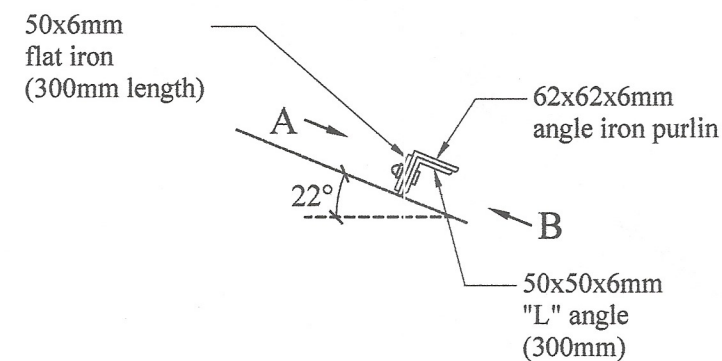
Tel: 09122-42786 / 09122-42789 / 09122-48181 / 09122-83125 / 09122-42382 / 0912283745  
Fax: 09122-42786 / 09122-42789 / 09122-48181 / 09122-83125 E-mail: engserv@spes.gov.lk



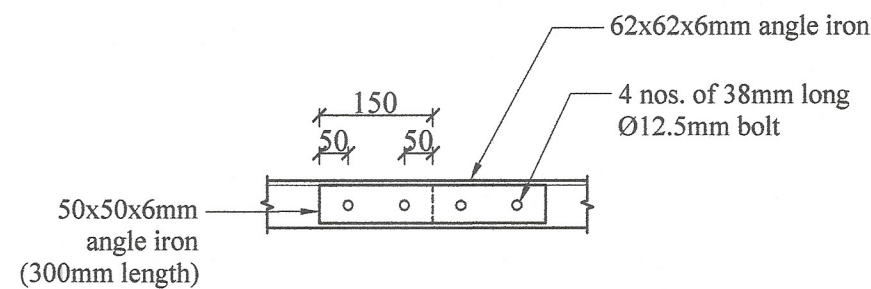
**PURLIN LAYOUT**  
Scale - 1:100



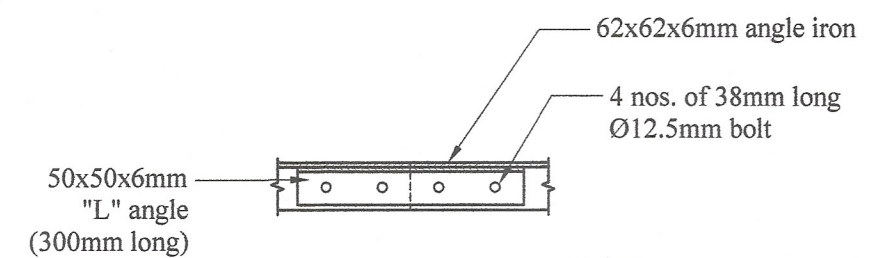
**DETAIL AT-X**  
Scale - 1:10



**LENGTHENING JOINT**  
Scale - 1:10



**VIEW-A**  
Scale - 1:10



**VIEW-B**  
Scale - 1:10

No any alteration is allowed without due permission of DCS(Eng). Any unauthorized alteration is subjected to have disciplinary action. Reproduction is not permitted.  
DCS(Eng)

**LENGTHENING JOINTS OF PURLIN ON TRUSS**

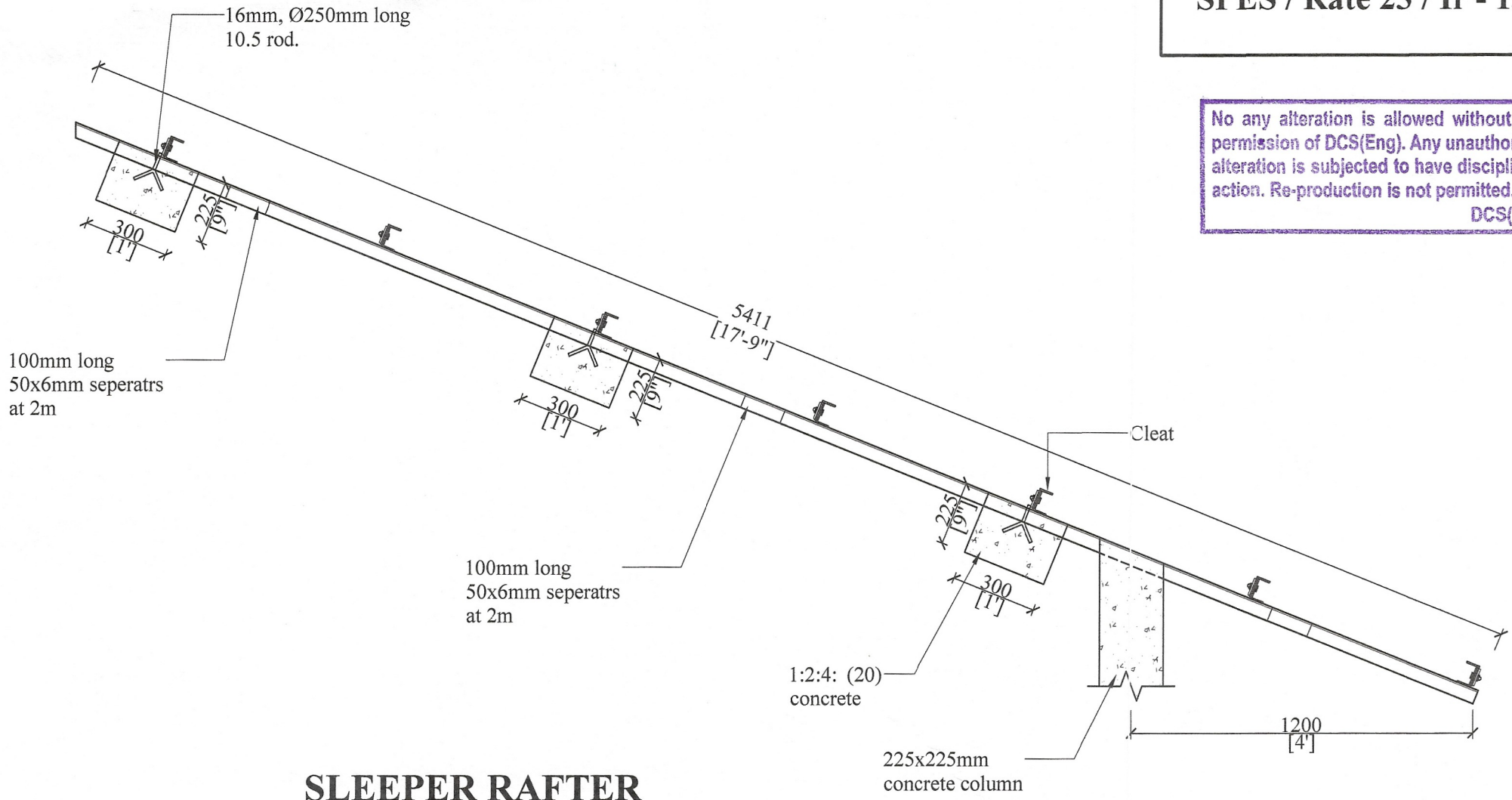
All right reserved this work or any part of there of may not be reproduced without written permission of the Engineering Services Office of Southern Provincial Council.

Sheet No : 01	Checked By : <i>S.P. Wimalasinghe</i>
Drawing No : SPES / Rate 23 / Ir - 12	D.O.A. (Gen. Manager) : <i>C. Doshi</i>
Scale : 1:100, 1:10	Engineer Assistant : <i>[Signature]</i>
Date : 2023-09-18	Design Engineer (Eng. N.M.S. Manasinghe) : <i>N. Manasinghe</i>
Drawn By : Monali	Director (Engineering) : (Eng. C.B. Abeyaratne) : <i>C.B.A.</i>

**DETAILED DRAWING (RATE ANALYSIS)**

**ENGINEERING SERVICES OFFICE.**  
SOUTHERN PROVINCIAL COUNCIL, GALLE.  
Tel: 09122-42700 / 09122-42701 / 09122-40161 / 09122-32125 / 09122-40282 / 090220745  
Fax: 09122-42706 / 09122-42705 / 09122-40161 / 09122-32125 Email: engserv@spco.lk

No any alteration is allowed without due permission of DCS(Eng). Any unauthorized alteration is subjected to have disciplinary action. Re-production is not permitted.  
DCS(Eng)




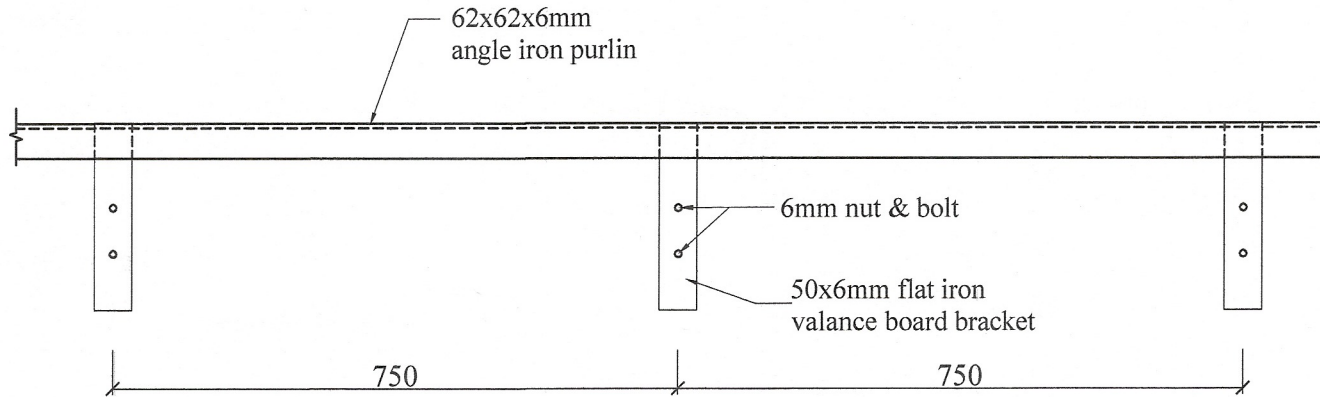
**SLEEPER RAFTER**

Scale - 1:10

**SLEEPER RAFTER**

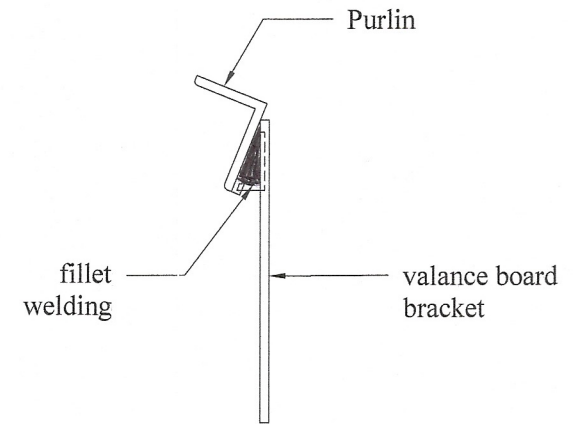
All right reserved this work or any part of there of may not be reproduced without written permission of the Engineering Services Office of Southern Provincial Council.

Sheet No : 01	Checked By : <i>S.P. Weerasinghe</i>	<b>DETAILED DRAWING (RATE ANALYSIS)</b>
Drawing No : SPES / Rate 23 / Ir -13	D.O.A. : <i>C. Rajapaksa</i>	
Scale : 1:20	Engineer Assistant : <i>A.S.D.</i>	 <b>ENGINEERING SERVICES OFFICE, SOUTHERN PROVINCIAL COUNCIL, GALLE.</b> <small>Tel: 09122-42781/19122-42785 09122-49181 / 09122-50151/19122-49392 / 092235745 Fax: 09122-42786 / 19122-42785 09122-49181 / 09122-50155 E-mail: engservices@spco.com</small>
Date : 2023-08-04	Design Engineer : <i>N.M.M.S. Manasinghe</i>	
Drawn By : Monali	Director (Engineering) : <i>C.B.R.</i>	



**FRONT ELEVATION**

Scale - 1:10



**SECTION**

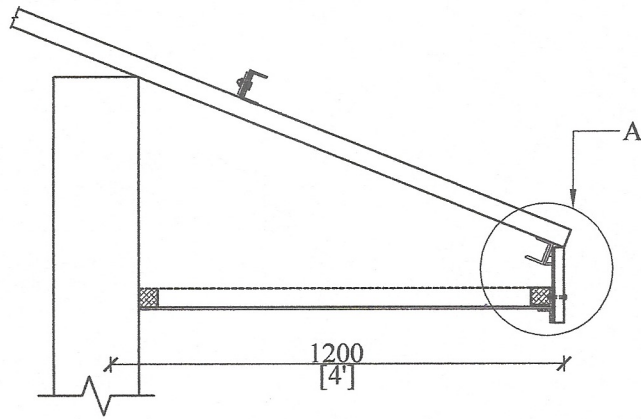
Scale - 1:10

No alteration is allowed without due permission of DCS(Eng). Any unauthorized alteration is subjected to have disciplinary action. Re-production is not permitted.  
DCS(Eng)

**VALANCE BOARD FIXING**

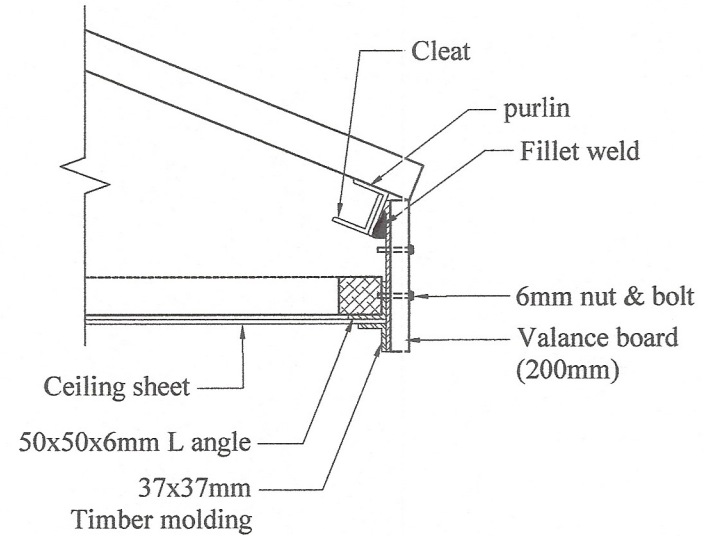
All right reserved this work or any part of there of may not be reproduced without written permission of the Engineering Services Office of Southern Provincial Council.

Sheet No : 01	Checked By : <i>S. P. Weerasinghe</i>	<b>DETAILED DRAWING (RATE ANALYSIS)</b>
Drawing No : SPES / Rate 23 / Ir - 14	D.O.A. : <i>C. B. B.</i>	
Scale : 1 : 10, 1 : 5	Engineer Assistant : <i>N. A. M.</i>	ENGINEERING SERVICES OFFICE, SOUTHERN PROVINCIAL COUNCIL, GALLE. Tel: 09122-42786 / 09122-42785 / 09122-45161 / 09122-35125 / 09122-48282 / 09122-38745 Fax: 09122-42766 / 09122-42765 / 09122-45161 / 09122-35125 E-mail: engservices@slpc.com
Date : 2023-09-18	Design Engineer : <i>N. A. M.</i>	
Drawn By : Monali	Director (Engineering) : <i>C. B. B.</i>	



**EAVES CEILING &  
VALANCE BOARDFIXING**

Scale - 1:20




**DETAIL AT - A**

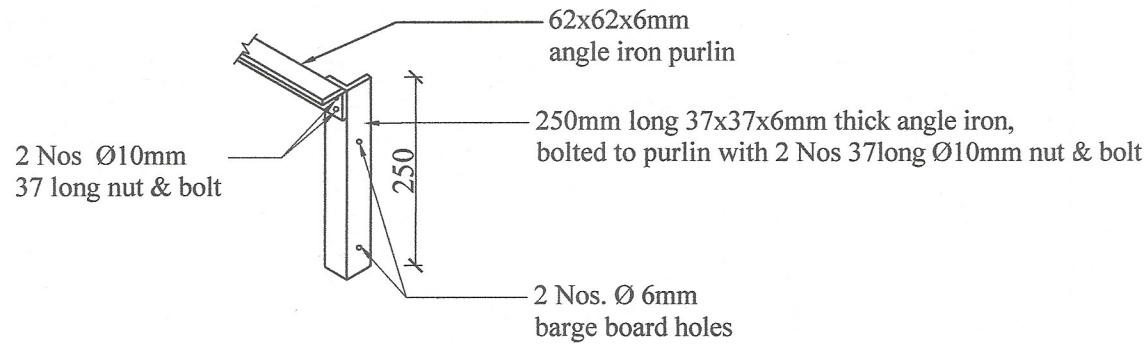
Scale - 1:10

No any alteration is allowed without due permission of DCS(Eng). Any unauthorized alteration is subjected to have disciplinary action. Re-production is not permitted.  
DCS(Eng)

**DETAIL DRAWING FOR EAVES CEILING,  
VALANCE BOARD FIXING AND**

All right reserved this work or any part of there of may not be reproduced without written permission of the Engineering Services Office of Southern Provincial Council.

Sheet No : 01	Checked By : <i>Syau</i> (S.P. Wehathilage)	<b>DETAILED DRAWING (RATE ANALYSIS)</b>
Drawing No : SPES / Rate 23 / Ir - 15	D.O.A. : <i>C. Dasila</i> (GNR. Ekampala)	
Scale : 1:20, 1:10	Engineer Assistant : <i>A.D.</i> (U.S.S. Premathilaka)	 <b>ENGINEERING SERVICES OFFICE.</b> SOUTHERN PROVINCIAL COUNCIL, GALLE. Tel- 09122-42786 / 09122-42787 09122-40161 / 09122-33125 / 09122-40392 / 0902301745 Fax- 09122-42786 / 09122-42787 09122-40161 / 09122-33125 E-mail- engserv@spc.gov.lk
Date : 2023-08-04	Design Engineer : <i>N. Manjula</i> (Eng. N.M.S. Manjula)	
Drawn By : Monali	Director (Engineering) : <i>C.B.A.</i> (Eng. C.B. Abayakera)	




## BARGE BOARD BRACKET

Scale - 1:10

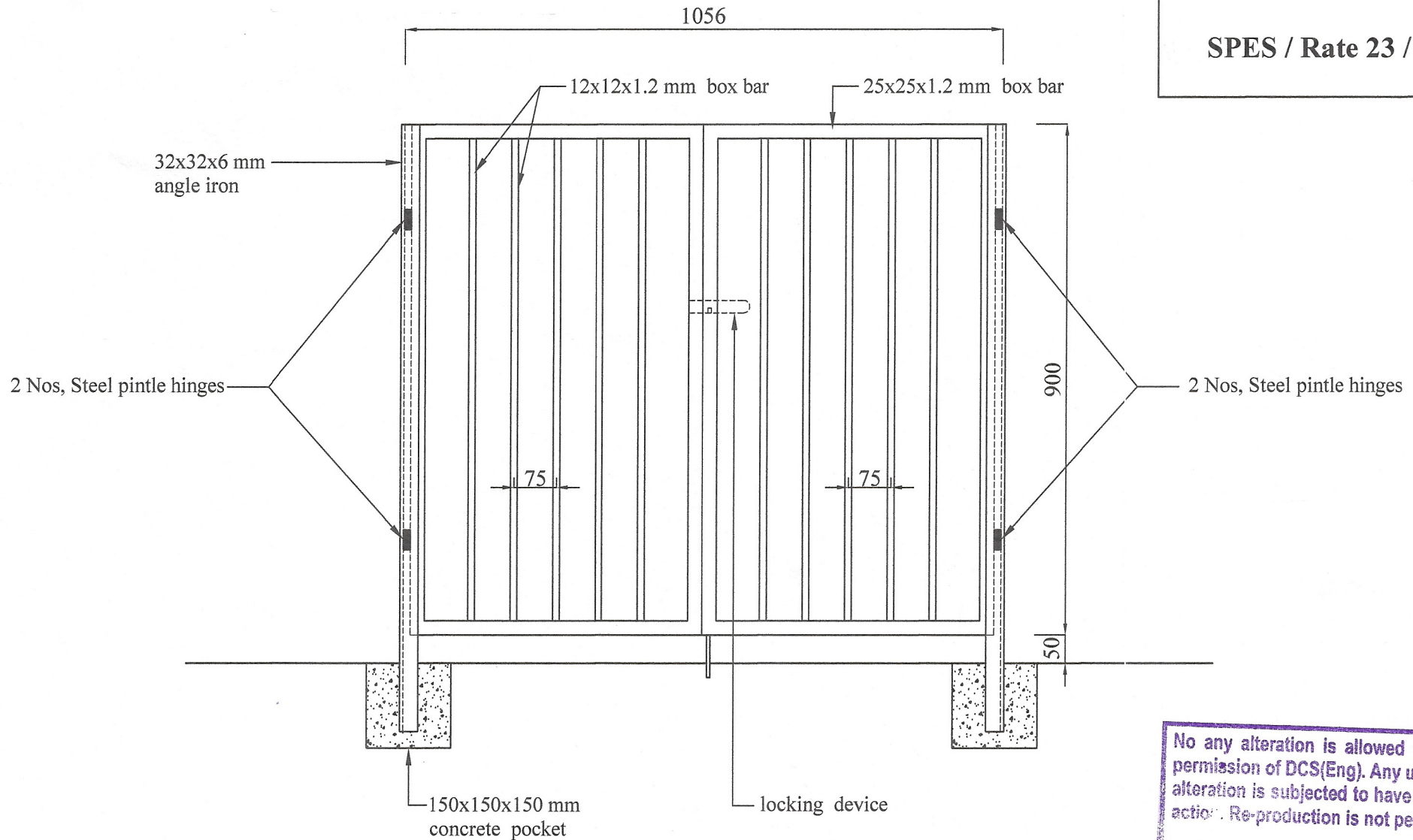
No any alteration is allowed without due permission of DCS(Eng). Any unauthorized alteration is subjected to have disciplinary action. Re-production is not permitted.  
DCS(Eng)

### BARGE BOARD BRACKET

All right reserved this work or any part of there of may not be reproduced without written permission of the Engineering Services Office of Southern Provincial Council.

Sheet No : 01	Checked By (S.P. Wimalasinghe) : <i>S.P. Wimalasinghe</i>	<b>DETAILED DRAWING (RATE ANALYSIS)</b>
Drawing No : SPES / Rate 23 / Ir - 16	D.O.A. (G.N.R. Ekanayake) : <i>G.N.R. Ekanayake</i>	
Scale : 1:10	Engineer Assistant : (H.K.S. Premathilake) : <i>H.K.S. Premathilake</i>	 <b>ENGINEERING SERVICES OFFICE.</b> SOUTHERN PROVINCIAL COUNCIL, GALLE. <small>Tel: 09122-42780 / 09122-42785 / 09122-46181 / 09122-33125 / 09122-48382 / 090233145                  Fax: 09122-42781 / 09122-42783 / 09122-46181 / 09122-33125 E-mail: engservices@stpc.lk</small>
Date : 2023-08-04	Design Engineer (Eng. N.M.S. Manasinghe) : <i>N.M.S. Manasinghe</i>	
Drawn By : Monali	Director (Engineering) : (Eng. C.H. Abeysena) : <i>C.H. Abeysena</i>	

SPES / Rate 23 / Ir - 17



No any alteration is allowed without due permission of DCS(Eng). Any unauthorized alteration is subjected to have disciplinary action. Re-production is not permitted.  
DCS(Eng)

**CLASS ROOM GATE  
( DOUBLE HUNGE )**

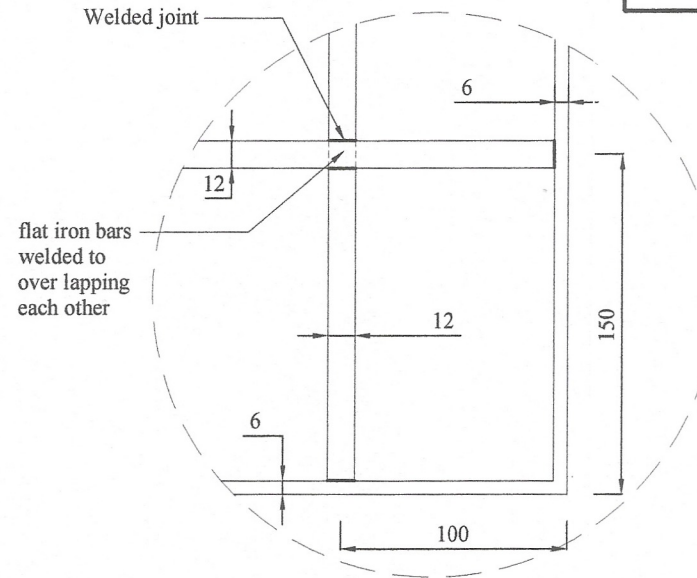
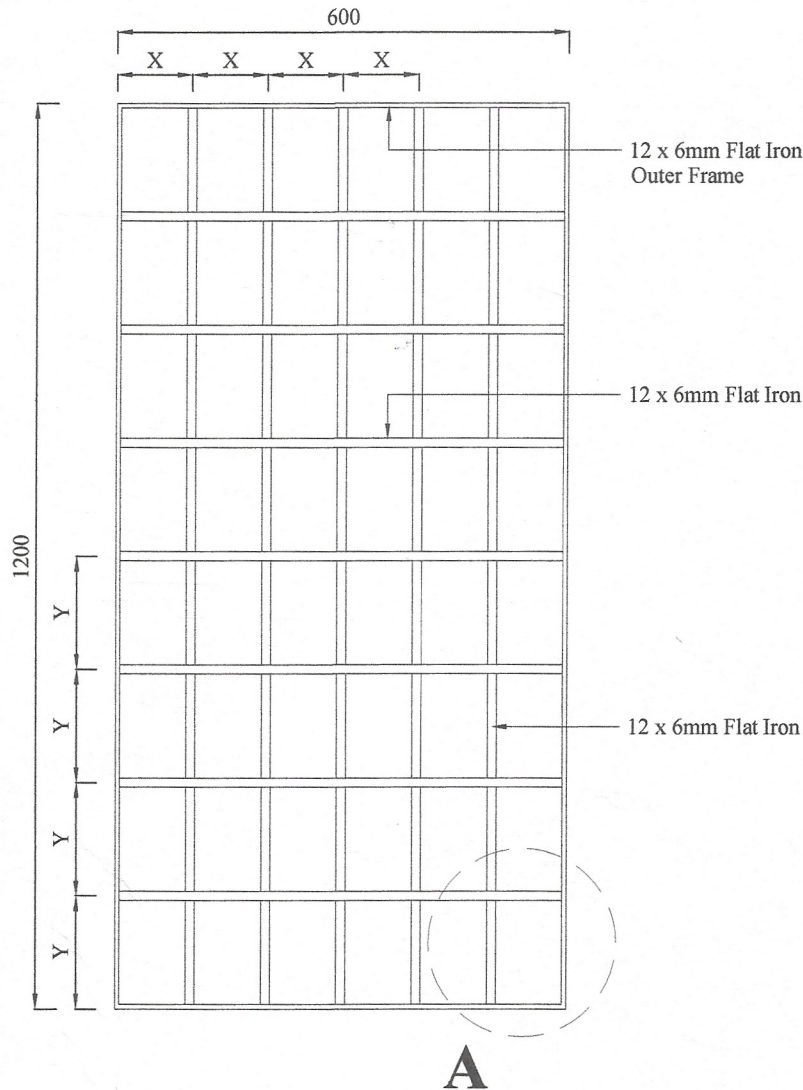
All right reserved this work or any part of there of may not be reproduced without written permission of the Engineering Services Office of southern Provincial council.

Sheet No : 01	Checked By : <i>S. P. W. (S.P. Werthasinghe)</i>
Drawing No : SPES / Rate 23 / Ir - 17	D.O.A. : <i>C. Dashik (GNR. E. Manjula)</i>
Scale : 1 : 10	Engineer Assistant : <i>(H.E.S. P. Manjula)</i>
Date : 2023-09-18	Design Engineer : <i>N. Manjula (Eng. N.M. S. Manjula)</i>
Drawn By : <i>Madu (P. Madushanka)</i>	Director (Engineering) : <i>C.B. (Eng. C.B. Abayaratne)</i>

**DETAILED DRAWING  
( RATE ANALYSIS )**

**ENGINEERING SERVICES OFFICE.**  
SOUTHERN PROVINCIAL COUNCIL, GALLE.

16- 09122-42786 / 09122-42785 / 09122-46161 / 09122-33125 / 09122-42882 / 0602858745  
 FAX- 09122-42786 / 09122-42785 / 09122-46161 / 09122-33125 E-mail- engserv@spc.gov.lk



**DETAIL - 'A'**

No any alteration is allowed without due permission of DCS(Eng). Any unauthorized alteration is subjected to have disciplinary action. Re-production is not permitted.  
DCS(Eng)

**NOTE -**

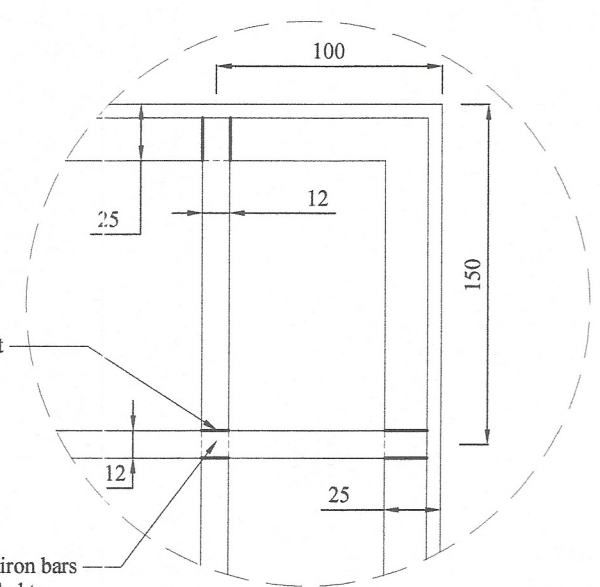
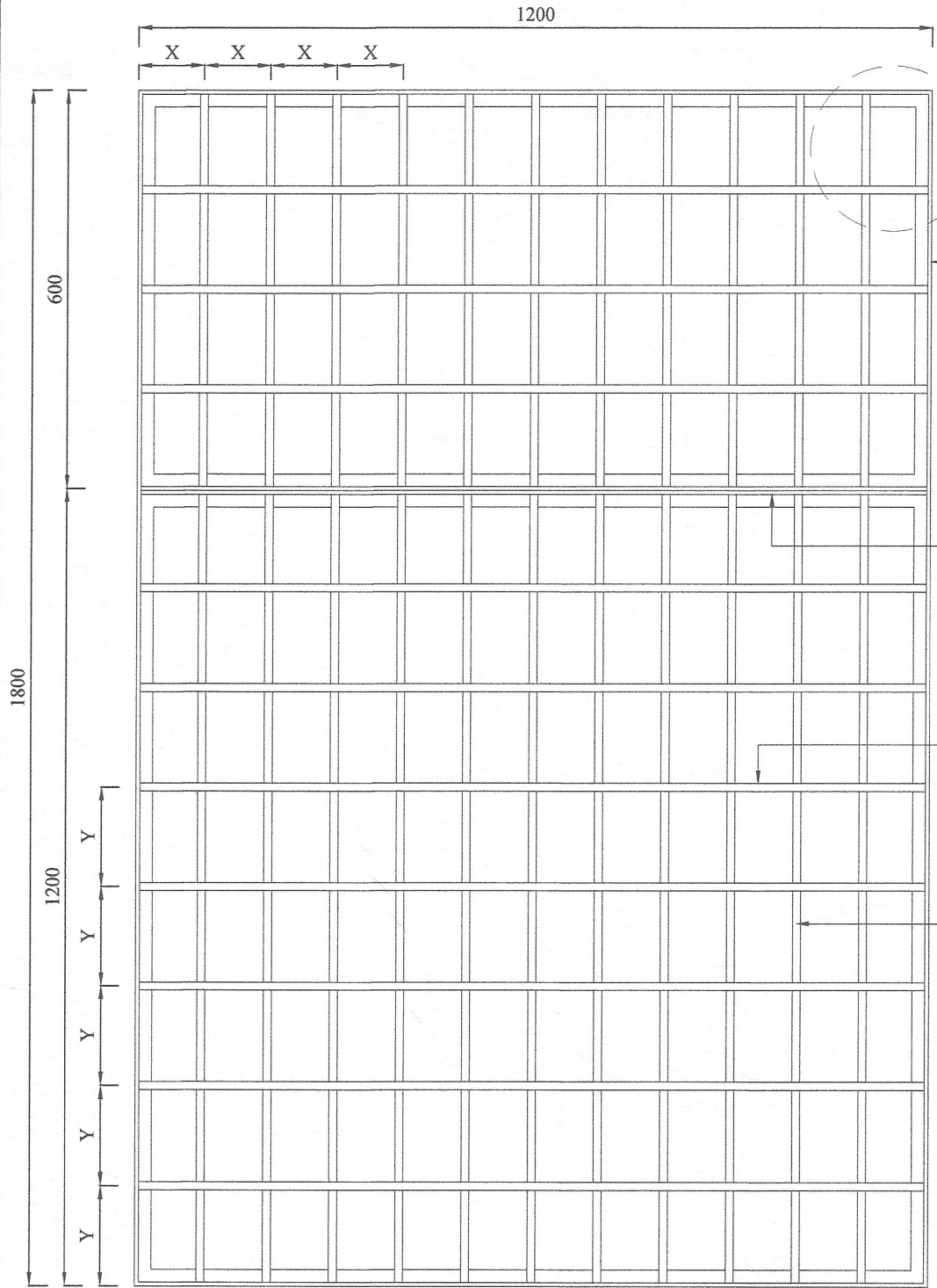
1. X = Width not exceeding 100mm
2. Y = Width not exceeding 150mm
3. All joint should be jointed with electric arc welding
4. Frame should be fixed to window jamb with rawl plug & iron screws
5. **PAINT**  
One coat of metal primer  
& two coats of matt enamel paint ( black )

**M.S. FLAT IRON SECURITY GRILL  
(TYPE - A)**

**DETAILED DRAWING  
(RATE ANALYSIS)**

All right reserved this work or any part of there of may not be reproduced without written permission of the Engineering Services Office of southern Provincial council.

Sheet No : 01	Checked By : <i>S. P. Weerasinghe</i> (S.P. Weerasinghe)
Drawing No : SPES/Rate23/Tr-18	D.O.A. : <i>C. Prashanth</i> (G.N.R. Prashanth)
Scale : 1-10	Engineer Assistant : <i>[Signature]</i> (H.K.S. Prasad)
Date : 2023-05-08	Design Engineer : <i>N. M. S. Mousangle</i> (Eng. N.M.S. Mousangle)
Drawn By : <i>[Signature]</i> (K.S. Nishani)	Director (Engineer) : <i>[Signature]</i> (Eng. C.B. Abeyardena)



**DETAIL - 'A'**

- 1/25x25x3mm Angle Iron
- 2/25x25x3mm Angle Iron
- 12 x 6mm Flat Iron
- 12 x 6mm Flat Iron

No any alteration is allowed without due permission of DCS(Eng). Any unauthorized alteration is subjected to have disciplinary action. Re-production is not permitted.  
DCS(Eng)

- NOTE
1. X = Width not exceeding 100mm
  2. Y = Width not exceeding 150mm
  3. All joint should be jointed with electric arc welding
  4. Frame should be fixed to window jamb with rawl plug & iron screws
  5. PAINT  
One coat of metal primer  
& two coats of matt enamel paint ( black )

**M.S. FLAT IRON SECURITY GRILL  
(TYPE - B)**

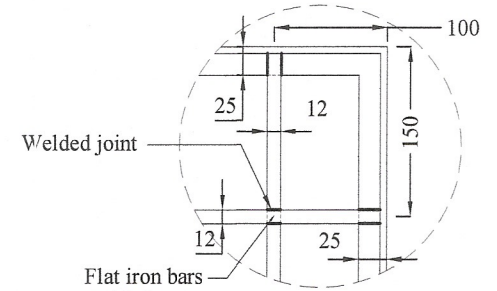
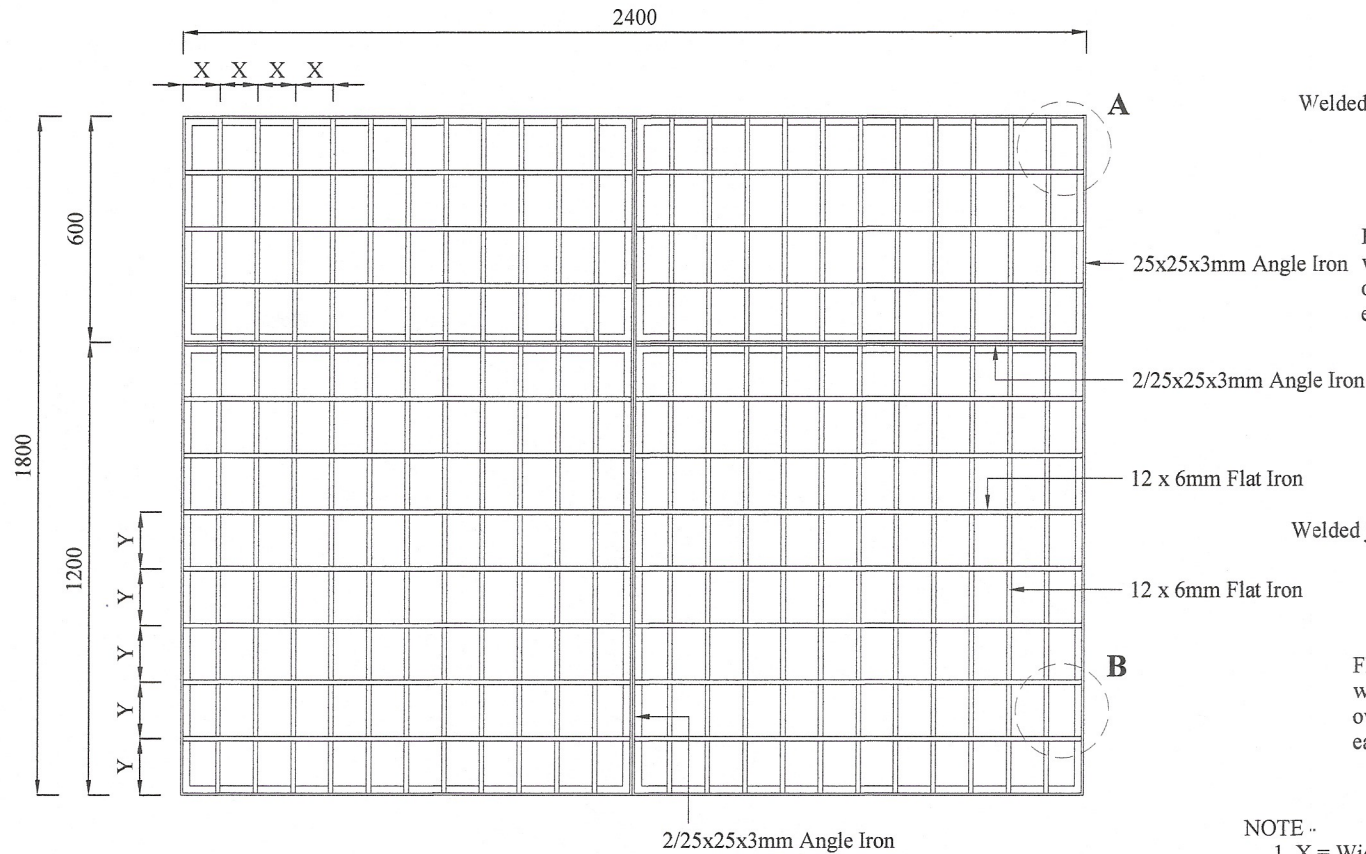
**DETAILED DRAWING  
( RATE ANALYSIS )**

All right reserved this work or any part of there of may not be reproduced without written permission of the Engineering Services Office of southern Provincial council.

Sheet No : 01	Checked By (S.P. Weerasinghe)	<i>S.P. Weerasinghe</i>
Drawing No : SPES/Rate23/Ir-19	D.O.A. (G.N.R. Ekanayake)	<i>G.N.R. Ekanayake</i>
Scale : 1-10	Engineer Assistant (H.K.S. Premathilake)	<i>H.K.S. Premathilake</i>
Date : 2023-05-08	Design Engineer (Eng. N.M.S. Manasinghe)	<i>N.M.S. Manasinghe</i>
Drawn By (K.S. Nishani)	Director ( Engineer ) ( Eng. C.B. Abeyaratne )	<i>C.B. Abeyaratne</i>

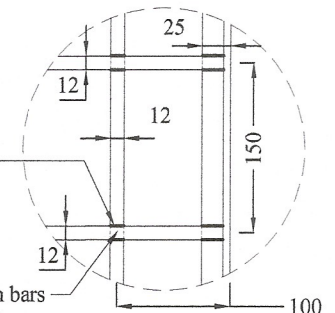
**ENGINEERING SERVICES OFFICE.**  
SOUTHERN PROVINCIAL COUNCIL, GALLE

Tel: 08122-42781 / 08122-42782 / 08122-42783 / 08122-39125 / 08122-42381 / 08122-39116  
Fax: 08122-42781 / 08122-42782 / 08122-42783 / 08122-39125 E-mail: esg@spc.gov.lk



Welded joint  
Flat iron bars welded to over lapping each other

**DETAIL - 'A'**



Welded joint  
Flat iron bars welded to over lapping each other

**DETAIL - 'B'**

**NOTE -**

1. X = Width not exceeding 100mm
2. Y = Width not exceeding 150mm
3. All joint should be jointed with electric arc welding
4. Frame should be fixed to window jamb with rawl plug & iron screws
5. PAINT  
One coat of metal primer & two coats of matt enamel paint ( black )

No any alteration is allowed without due permission of DCS(Eng). Any unauthorized alteration is subjected to have disciplinary action. Re-production is not permitted.  
DCS(Eng)

**M.S. FLAT IRON SECURITY GRILL  
(TYPE - C)**

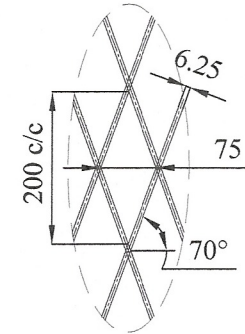
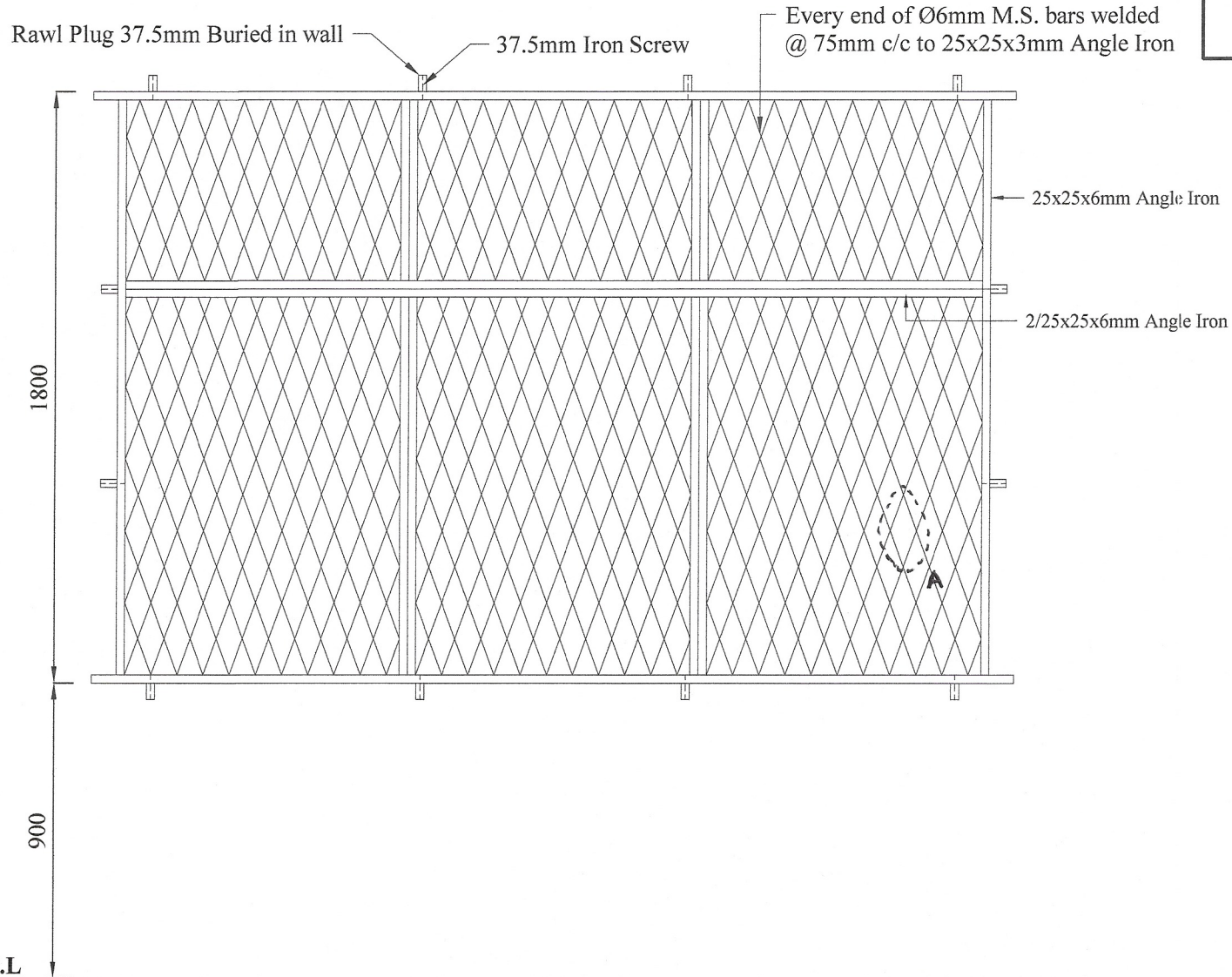
All right reserved this work or any part of there of may not be reproduced without written permission of the Engineering Services Office of southern Provincial council.

Sheet No : 01	Checked By : <i>S. P. Weethasinghe</i>
Drawing No : SPES/Rate23/Ir-20	D.O.A. : <i>C. Dashi</i> (G.N.R. Ekanayake)
Scale : 1 - 20	Engineer Assistant : <i>[Signature]</i> (H.K.S. Premathilake)
Date : 2023-05-08	Design Engineer : <i>N. Manjula</i> (Eng. N.M.S. Mamsinghe)
Drawn By : <i>[Signature]</i> (K.S. Nishani)	Director (Engineer) : <i>[Signature]</i> (Eng. C.B. Abeyudera)

**DETAILED DRAWING  
(RATE ANALYSIS)**

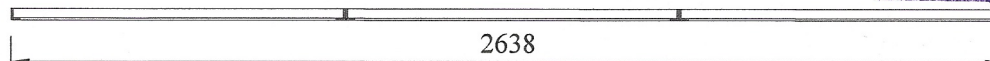
**ENGINEERING SERVICES OFFICE,  
SOUTHERN PROVINCIAL COUNCIL, GALLE.**

Tel: 09122-42781 / 09122-42781 / 09122-49161 / 09122-50126 / 09122-49281 / 09122-50115  
Fax: 09122-42781 / 09122-42781 / 09122-49161 / 09122-50126 E-mail: engservices@spcc.gov.lk



**DETAIL - 'A'**

**ELEVATION**



**PLAN**

No any alteration is allowed without due permission of DCS(Eng). Any unauthorized alteration is subjected to have disciplinary action. Re-production is not permitted.  
DCS(Eng)

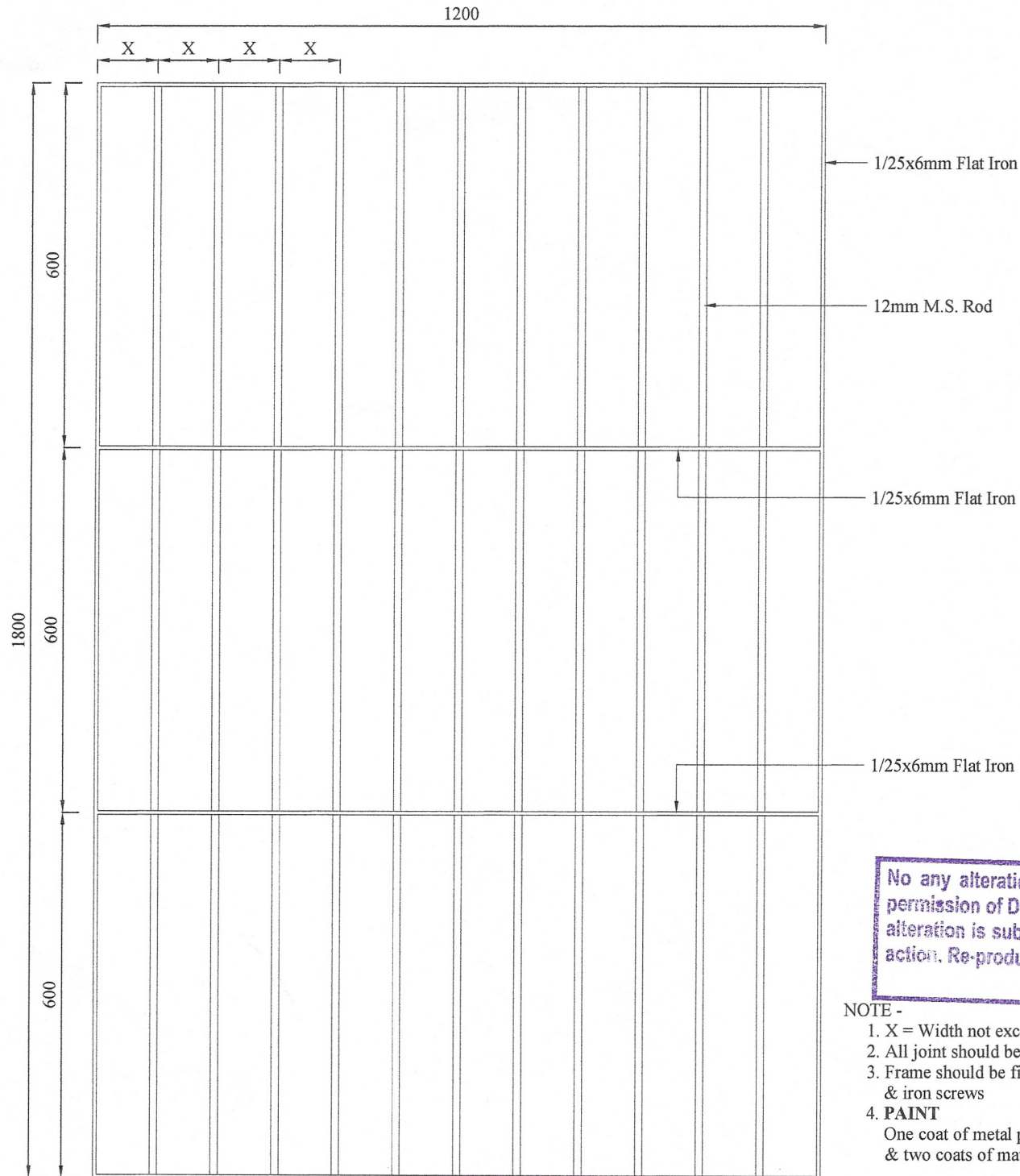
**6mm M.S. ROD SECURITY GRILL  
(TYPE - A)**

**DETAILED DRAWING  
(RATE ANALYSIS)**

All right reserved this work or any part of there of may not be reproduced without written permission of the Engineering Services Office of southern Provincial council.

Sheet No : 01	Checked By : <i>S.P. Weerasinghe</i> (S.P. Weerasinghe)
Drawing No : SPES/Rate23/Tr-21	D.O.A. : <i>D. Rajapaksa</i> (G.N.R. Ekampala)
Scale : 1-20	Engineer Assistant : <i>H.K.S. Perera</i> (H.K.S. Perera)
Date : 2023-05-15	Design Engineer : <i>N. Manjula</i> (Eng. N.M.S. Manjula)
Drawn By : <i>S. S. Nishani</i>	Director (Engineer) : <i>C.B. Abeyadana</i> (Eng. C.B. Abeyadana)





**12mm M.S. ROD SECURITY GRILL  
(TYPE - B)**

**DETAILED DRAWING  
(RATE ANALYSIS)**

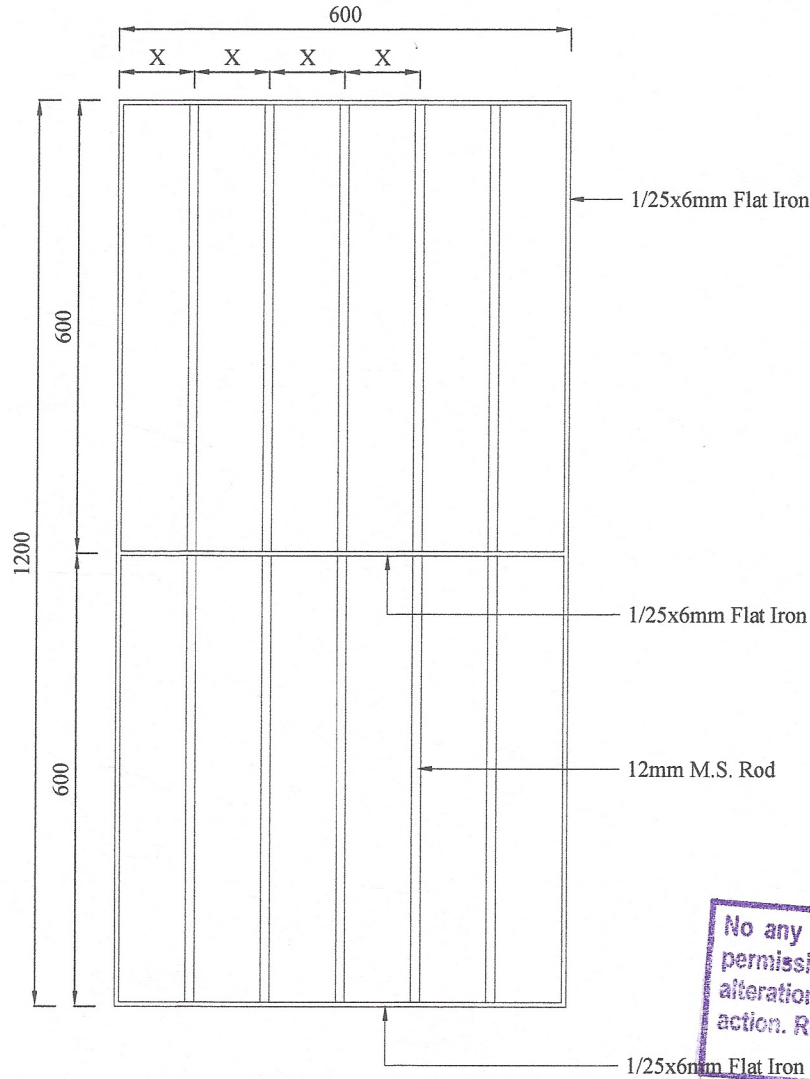
All right reserved this work or any part of there of may not be reproduced without written permission of the Engineering Services Office of southern Provincial council.

No any alteration is allowed without due permission of DCS(Eng). Any unauthorized alteration is subjected to have disciplinary action. Re-production is not permitted.  
DCS(Eng)

**NOTE -**

1. X = Width not exceeding 100mm
2. All joint should be jointed with electric arc welding
3. Frame should be fixed to window jamb with rawl plug & iron screws
4. **PAINT**  
One coat of metal primer & two coats of matt enamel paint ( black )

Sheet No : 01	Checked By : <i>S. Jayama</i> (S.P. Weerasinghe)
Drawing No : SPES/Rate23/Tr-24	D.O.A. : <i>C. Doshi</i> (G.N.R. Ekanayake)
Scale : 1-10	Engineer Assistant : <i>A.S.</i> (H.K.S. Prasadula)
Date : 2023-05-08	Design Engineer : <i>A. M. M. M.</i> (Eng. N.M.S. Manasinghe)
Drawn By : <i>S. S. Nishani</i>	Director (Engineer) : <i>C. B. A.</i> (Eng. C.B. Abeyaratne)



No any alteration is allowed without due permission of DCS(Eng). Any unauthorized alteration is subjected to have disciplinary action. Re-production is not permitted.  
DCS(Eng)

NOTE -

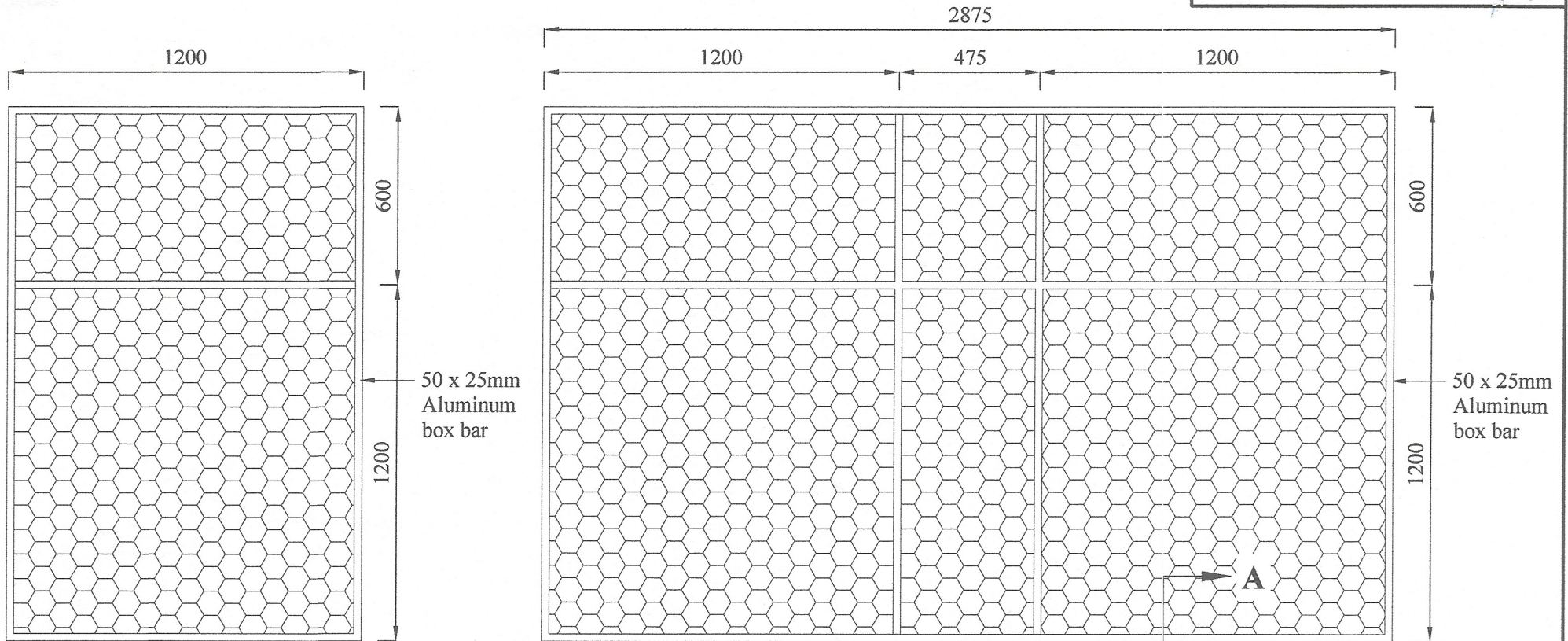
1. X = Width not exceeding 100mm
2. All joint should be jointed with electric arc welding & iron screws
3. Frame should be fixed to window jamb with rawl plug & iron screws
4. PAINT  
One coat of metal primer  
& two coats of matt enamel paint ( black )

**12mm M.S. ROD SECURITY GRILL  
( TYPE - A )**

**DETAILED DRAWING  
( RATE ANALYSIS )**

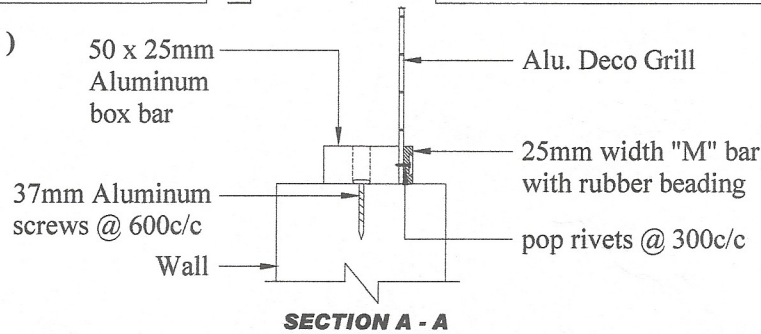
All right reserved this work or any part of there of may not be reproduced without written permission of the Engineering Services Office of southern Provincial council

Sheet No : 01	Checked By : <i>S.P. Wickramasinghe</i> (S.P. Wickramasinghe)
Drawing No : SPES/Rate23/Ir-24	D.O.A. : <i>C.P. Jayasinghe</i> (C.N.R. Ekamayake)
Scale : 1 - 10	Engineer Assistant : <i>H.K.S. Premathilake</i> (H.K.S. Premathilake)
Date : 2023-05-08	Design Engineer : <i>N.M.S. Mamasinghe</i> (Eng. N.M.S. Mamasinghe)
Drawn By : <i>Suman</i> (K.S. Nishani)	Director ( Engineer ) : <i>C.B. Abayawardena</i> ( Eng. C.B. Abayawardena )



( SPES/Rate23/Ir-25 )

( SPES/Rate23/Ir-26 )



No any alteration is allowed without due permission of DCS(Eng). Any unauthorized alteration is subjected to have disciplinary action. Re-production is not permitted.  
DCS(Eng)

**ALUMINUM DECO GRILL**

All right reserved this work or any part of there of may not be reproduced without written permission of the Engineering Services Office of southern Provincial council.

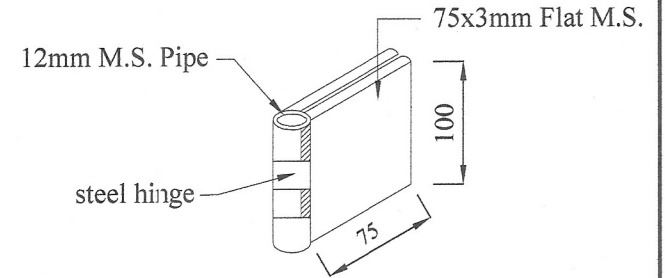
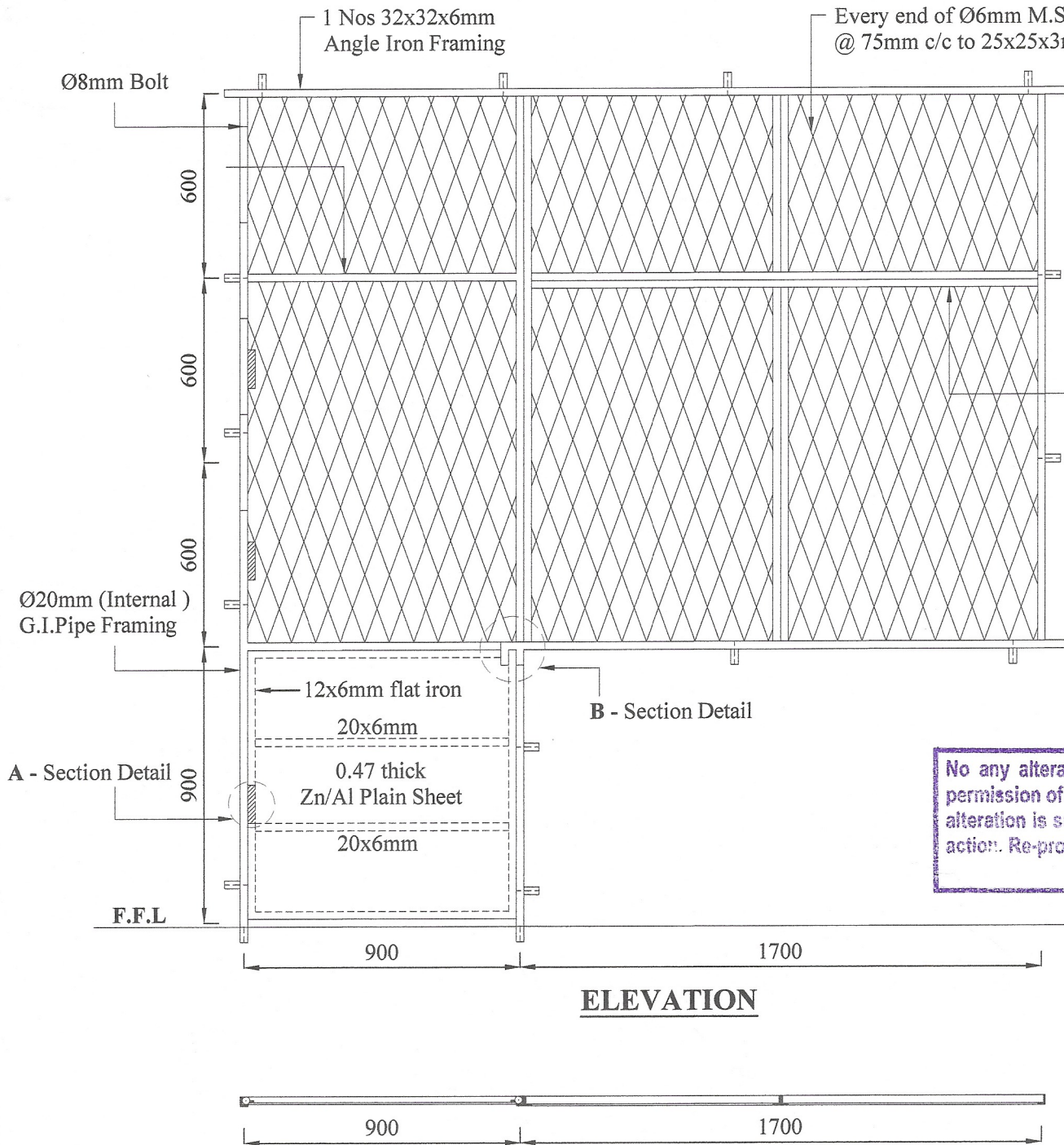
Sheet No : 01	Checked By (S.P.Welshsinghe) : <i>Syau</i>
Drawing No : SPES/Rate23/Ir-25	D.O.A. (G.N.R.Ekanyake) : <i>C.Prasanth</i>
Scale : 1 - 20	Engineer Assistant (H.E.S.Pramathika) : <i>[Signature]</i>
Date : 2023-05-08	Design Engineer (Eng.N.M.S.Munasinghe) : <i>N. Maza</i>
Drawn By (K.S.Nishani) : <i>[Signature]</i>	Director ( Engineer ) (Eng.C.B.Ahayan) : <i>[Signature]</i>

**DETAILED DRAWING ( RATE ANALYSIS )**

**ENGINEERING SERVICES OFFICE.**  
SOUTHERN PROVINCIAL COUNCIL, GALLE

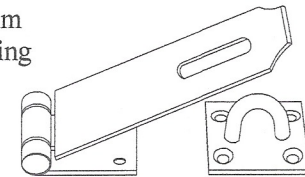
Tel: 09122-42788 / 09122-42789 / 09122-49181 / 09122-33125 / 09122-42822 / 0902300145  
Fax: 09122-42786 / 09122-42787 / 09122-45161 / 09122-33125 E-mail: engserv@spc.lk

**SPES/Rate23/Ir-28**



**DETAIL A - HINGES**

2 Nos 25x25x3mm Angle Iron Framing



**DETAIL B**

No any alteration is allowed without due permission of DCS(Eng). Any unauthorized alteration is subjected to have disciplinary action. Re-production is not permitted.  
DCS(Eng)

**6mm M.S. ROD  
SECURITY GRILL & DOOR**

**DETAILED DRAWING  
(RATE ANALYSIS)**

All right reserved this work or any part of there of may not be reproduced without written permission of the Engineering Services Office of southern Provincial council.

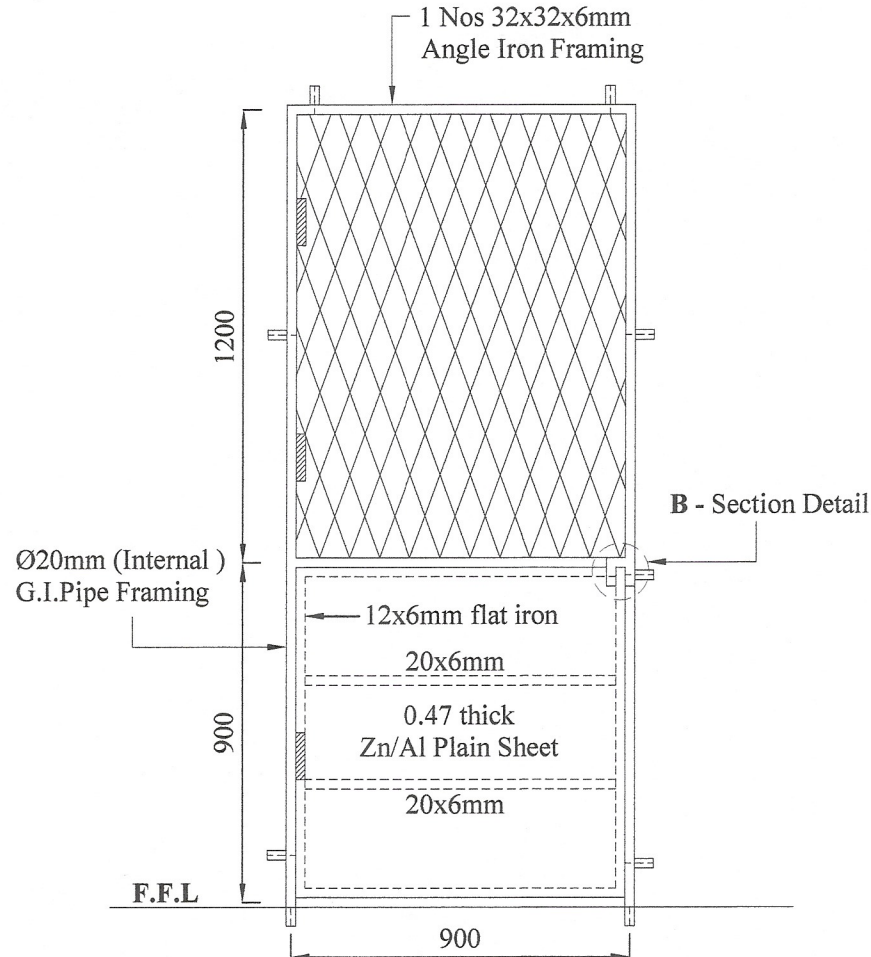
Sheet No : 01/02	Checked By : <i>S. Jayas</i> (S.P. Weerasinghe)
Drawing No : SPES/Rate23/Ir-28	D.O.A. : <i>C. Rajan</i> (G.N.R. Ekamayake)
Scale : 1-20	Engineer Assistant : <i>A.S.</i> (H.K.S. Premaratne)
Date : 2023-05-15	Design Engineer : <i>A. Manoj</i> (Eng. N.M.S. Manasinghe)
Drawn By : <i>S. Subh</i> (K. S. Wehani)	Director (Engineer) : <i>C.B.A.</i> (Eng. C.B. Abeyrathna)

**ENGINEERING SERVICES OFFICE**  
SOUTHERN PROVINCIAL COUNCIL, GALLE

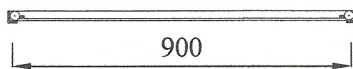
Tel: 09122-42786 / 09122-42789 / 09122-49181 / 09122-33125 / 09122-48282 / 09122-38745  
 FAX: 09122-42786 / 09122-42789 / 09122-49181 / 09122-33125 E-mail: engservices@spcc.lk

**ELEVATION**

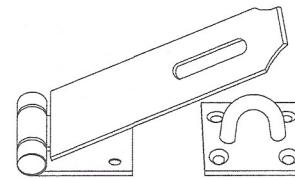
**PLAN**



**DETAIL OF DOOR SASH**



**PLAN**



**DETAIL B**

**6mm M.S. ROD  
SECURITY GRILL DOOR**

**DETAILED DRAWING  
(RATE ANALYSIS)**

All right reserved this work or any part of there of may not be reproduced without written permission of the Engineering Services Office of southern Provincial council.

Sheet No : 02/02	Checked By : <i>Sgaur</i> (S.P. Weerasinghe)
Drawing No : SPES/Rate23/Ir-28	D.O.A. : <i>C.P. Rajapaksa</i> (G.N.R. Ekanayake)
Scale : 1 - 20	Engineer Assistant : <i>A.P.D.</i> (H.K.S. Premathilake)
Date : 2023-05-15	Design Engineer : <i>N.S. Rajapaksa</i> (Eng. M.M.S. Masingale)
Drawn By : <i>Sanku</i> (K.S. Nishani)	Director (Engineer) : <i>C.P.D.</i> (Eng. C.B. Abeyaratne)

No any alteration is allowed without due permission of DCS(Eng). Any unauthorized alteration is subjected to have disciplinary action. Re-production is not permitted.  
**DCS(Eng)**

**ENGINEERING SERVICES OFFICE**  
SOUTHERN PROVINCIAL COUNCIL, GALLE.

Tel: 09122-42786 / 09122-42787 / 09122-46181 / 09122-32126 / 09122-48281 / 0922339716  
Fax: 09122-42786 / 09122-42787 / 09122-46181 / 09122-32126 E-mail: [esoffice@gpc.lk](mailto:esoffice@gpc.lk)